



Alpha

Alpha Analytical Laboratories, Inc.

email: clientservices@alpha-labs.com

Corporate: 208 Mason Street | Ukiah, CA 95482 | T: 707-468-0401 | F: 707-468-5267 | ELAP# 1551

03 February 2021

Sample Traps, LLC

Attn: Quality Control Manager

262 Rickenbacker Circle

Livermore, CA 94551

RE: QC- 40ml Clear VOA- HCl

Work Order: 21A2001

Enclosed are the results of analyses for samples received by the laboratory on 01/14/21 09:00. If you have any questions concerning this report, please feel free to contact me.

Sincerely,

Jeanette L. Poplin For Chelsea L. Sandelin

Project Manager



Alpha Analytical Laboratories, Inc. email: clientservices@alpha-labs.com
Corporate: 208 Mason Street | Ukiah, CA 95482 | T: 707-468-0401 | F: 707-468-5267 | ELAP# 1551

Sample Traps, LLC
262 Rickenbacker Circle
Livermore CA, 94551

Project Manager: Quality Control Manager
Project: QC- 40ml Clear VOA- HCl
Project Number: Silicone Batch #2020093003

Reported:
02/03/21 09:42

Bay Area: 262 Rickenbacker Circle | Livermore, CA 94551 | T: 925-828-6226 | F: 925-828-6309 | ELAP# 2728
Central Valley: 9090 Union Park Way Suite 113 | Elk Grove, CA 95624 | T: 916-686-5190 | F: 916-686-5192 | ELAP# 2922
North Bay: 110 Liberty Street | Petaluma, CA 94952 | T: 707-769-3128 | F: 707-769-8093 | ELAP# 2303
San Diego: 2722 Loker Avenue West Suite A | Carlsbad, CA 92010 | T: 760-930-2555 | F: 760-930-2510 | ELAP# 3055

ANALYTICAL REPORT FOR SAMPLES

Sample ID	Laboratory ID	Matrix	Date Sampled	Date Received
B1006CVBS - 01	21A2001-01	Water	01/14/21 00:00	01/14/21 09:00
B1006CVBS - 02	21A2001-02	Water	01/14/21 00:00	01/14/21 09:00



Alpha Analytical Laboratories, Inc. email: clientservices@alpha-labs.com
 Corporate: 208 Mason Street | Ukiah, CA 95482 | T: 707-468-0401 | F: 707-468-5267 | ELAP# 1551

Sample Traps, LLC
 262 Rickenbacker Circle
 Livermore CA, 94551

Project Manager: Quality Control Manager
 Project: QC- 40ml Clear VOA- HCl
 Project Number: Silicone Batch #2020093003

Reported:
 02/03/21 09:42

Volatile Organic Compounds by EPA Method 524.2

Analyte	Result	MDL	Reporting Limit	Units	Dilution	Batch	Prepared	Analyzed	Method	Analyst	ELAP#	Notes
B1006CVBS - 02 (21A2001-02) Water Sampled: 01/14/21 00:00 Received: 01/14/21 09:00												
Acetone	ND	2.0	5.0	ug/L	1	AA14664	01/26/21 13:03	01/28/21 13:13	EPA 524.2	LJJ	1551	U
Acrylonitrile	ND	0.40	5.0	ug/L	1	AA14664	01/26/21 13:03	01/28/21 13:13	EPA 524.2	LJJ	1551	U
Benzene	ND	0.10	0.30	ug/L	1	AA14664	01/26/21 13:03	01/28/21 13:13	EPA 524.2	LJJ	1551	U
Bromobenzene	ND	0.20	0.50	ug/L	1	AA14664	01/26/21 13:03	01/28/21 13:13	EPA 524.2	LJJ	1551	U
Bromochloromethane	ND	0.40	0.50	ug/L	1	AA14664	01/26/21 13:03	01/28/21 13:13	EPA 524.2	LJJ	1551	U
Bromodichloromethane	ND	0.20	0.50	ug/L	1	AA14664	01/26/21 13:03	01/28/21 13:13	EPA 524.2	LJJ	1551	U
Bromoform	ND	0.30	0.50	ug/L	1	AA14664	01/26/21 13:03	01/28/21 13:13	EPA 524.2	LJJ	1551	U
Bromomethane	ND	0.40	0.50	ug/L	1	AA14664	01/26/21 13:03	01/28/21 13:13	EPA 524.2	LJJ	1551	U
n-Butylbenzene	ND	0.50	0.50	ug/L	1	AA14664	01/26/21 13:03	01/28/21 13:13	EPA 524.2	LJJ	1551	U
sec-Butylbenzene	ND	0.20	0.50	ug/L	1	AA14664	01/26/21 13:03	01/28/21 13:13	EPA 524.2	LJJ	1551	U
tert-Butylbenzene	ND	0.50	0.50	ug/L	1	AA14664	01/26/21 13:03	01/28/21 13:13	EPA 524.2	LJJ	1551	U
Carbon disulfide	ND	0.40	0.50	ug/L	1	AA14664	01/26/21 13:03	01/28/21 13:13	EPA 524.2	LJJ	1551	U
Carbon tetrachloride	ND	0.30	0.50	ug/L	1	AA14664	01/26/21 13:03	01/28/21 13:13	EPA 524.2	LJJ	1551	U
Chlorobenzene	ND	0.20	0.50	ug/L	1	AA14664	01/26/21 13:03	01/28/21 13:13	EPA 524.2	LJJ	1551	U
Chloroethane	ND	0.30	0.50	ug/L	1	AA14664	01/26/21 13:03	01/28/21 13:13	EPA 524.2	LJJ	1551	U
Chloroform	ND	0.30	0.50	ug/L	1	AA14664	01/26/21 13:03	01/28/21 13:13	EPA 524.2	LJJ	1551	U
Chloromethane	ND	0.40	0.50	ug/L	1	AA14664	01/26/21 13:03	01/28/21 13:13	EPA 524.2	LJJ	1551	U
2-Chlorotoluene	ND	0.20	0.50	ug/L	1	AA14664	01/26/21 13:03	01/28/21 13:13	EPA 524.2	LJJ	1551	U
4-Chlorotoluene	ND	0.20	0.50	ug/L	1	AA14664	01/26/21 13:03	01/28/21 13:13	EPA 524.2	LJJ	1551	U
Dibromochloromethane	ND	0.30	0.50	ug/L	1	AA14664	01/26/21 13:03	01/28/21 13:13	EPA 524.2	LJJ	1551	U
1,2-Dibromo-3-chloropropane	ND	0.50	0.50	ug/L	1	AA14664	01/26/21 13:03	01/28/21 13:13	EPA 524.2	LJJ	1551	U
1,2-Dibromoethane (EDB)	ND	0.50	0.50	ug/L	1	AA14664	01/26/21 13:03	01/28/21 13:13	EPA 524.2	LJJ	1551	U
Dibromomethane	ND	0.20	0.50	ug/L	1	AA14664	01/26/21 13:03	01/28/21 13:13	EPA 524.2	LJJ	1551	U
1,2-Dichlorobenzene	ND	0.20	0.50	ug/L	1	AA14664	01/26/21 13:03	01/28/21 13:13	EPA 524.2	LJJ	1551	U
1,3-Dichlorobenzene	ND	0.20	0.50	ug/L	1	AA14664	01/26/21 13:03	01/28/21 13:13	EPA 524.2	LJJ	1551	U
1,4-Dichlorobenzene	ND	0.20	0.50	ug/L	1	AA14664	01/26/21 13:03	01/28/21 13:13	EPA 524.2	LJJ	1551	U
trans-1,4-Dichloro-2-butene	ND	0.90	5.0	ug/L	1	AA14664	01/26/21 13:03	01/28/21 13:13	EPA 524.2	LJJ	1551	U
Dichlorodifluoromethane	ND	0.50	0.50	ug/L	1	AA14664	01/26/21 13:03	01/28/21 13:13	EPA 524.2	LJJ	1551	U
1,1-Dichloroethane	ND	0.20	0.50	ug/L	1	AA14664	01/26/21 13:03	01/28/21 13:13	EPA 524.2	LJJ	1551	U
1,2-Dichloroethane	ND	0.10	0.50	ug/L	1	AA14664	01/26/21 13:03	01/28/21 13:13	EPA 524.2	LJJ	1551	U
1,1-Dichloroethene	ND	0.30	0.30	ug/L	1	AA14664	01/26/21 13:03	01/28/21 13:13	EPA 524.2	LJJ	1551	U
cis-1,2-Dichloroethene	ND	0.10	0.50	ug/L	1	AA14664	01/26/21 13:03	01/28/21 13:13	EPA 524.2	LJJ	1551	U
trans-1,2-Dichloroethene	ND	0.10	0.50	ug/L	1	AA14664	01/26/21 13:03	01/28/21 13:13	EPA 524.2	LJJ	1551	U
1,2-Dichloropropane	ND	0.20	0.50	ug/L	1	AA14664	01/26/21 13:03	01/28/21 13:13	EPA 524.2	LJJ	1551	U

The results in this report apply to the samples analyzed in accordance with the chain of custody document. This analytical report must be reproduced in its entirety.



Alpha Analytical Laboratories, Inc. email: clientservices@alpha-labs.com
 Corporate: 208 Mason Street | Ukiah, CA 95482 | T: 707-468-0401 | F: 707-468-5267 | ELAP# 1551

Sample Traps, LLC 262 Rickenbacker Circle Livermore CA, 94551	Project Manager: Quality Control Manager Project: QC- 40ml Clear VOA- HCl Project Number: Silicone Batch #2020093003	Reported: 02/03/21 09:42
---------------------------------------------------------------------	----------------------------------------------------------------------------------------------------------------------------	-----------------------------

Volatile Organic Compounds by EPA Method 524.2

Analyte	Result	MDL	Reporting Limit	Units	Dilution	Batch	Prepared	Analyzed	Method	Analyst	ELAP#	Notes
B1006CVBS - 02 (21A2001-02) Water Sampled: 01/14/21 00:00 Received: 01/14/21 09:00												
1,3-Dichloropropane	ND	0.10	0.50	ug/L	1	AA14664	01/26/21 13:03	01/28/21 13:13	EPA 524.2	LJJ	1551	U
2,2-Dichloropropane	ND	0.30	0.50	ug/L	1	AA14664	01/26/21 13:03	01/28/21 13:13	EPA 524.2	LJJ	1551	U
1,1-Dichloropropene	ND	0.20	0.50	ug/L	1	AA14664	01/26/21 13:03	01/28/21 13:13	EPA 524.2	LJJ	1551	U
cis-1,3-Dichloropropene	ND	0.30	0.50	ug/L	1	AA14664	01/26/21 13:03	01/28/21 13:13	EPA 524.2	LJJ	1551	U
trans-1,3-Dichloropropene	ND	0.30	0.50	ug/L	1	AA14664	01/26/21 13:03	01/28/21 13:13	EPA 524.2	LJJ	1551	U
1,3-Dichloropropene (total)	ND	0.30	0.50	ug/L	1	AA14664	01/26/21 13:03	01/28/21 13:13	EPA 524.2	LJJ	1551	U
2-Hexanone	ND	0.50	5.0	ug/L	1	AA14664	01/26/21 13:03	01/28/21 13:13	EPA 524.2	LJJ	1551	U
Ethylbenzene	ND	0.20	0.50	ug/L	1	AA14664	01/26/21 13:03	01/28/21 13:13	EPA 524.2	LJJ	1551	U
Hexachlorobutadiene	ND	0.40	0.50	ug/L	1	AA14664	01/26/21 13:03	01/28/21 13:13	EPA 524.2	LJJ	1551	U
Isopropylbenzene	ND	0.20	0.50	ug/L	1	AA14664	01/26/21 13:03	01/28/21 13:13	EPA 524.2	LJJ	1551	U
p-Isopropyltoluene	ND	0.50	0.50	ug/L	1	AA14664	01/26/21 13:03	01/28/21 13:13	EPA 524.2	LJJ	1551	U
Methyl ethyl ketone	ND	0.20	1.0	ug/L	1	AA14664	01/26/21 13:03	01/28/21 13:13	EPA 524.2	LJJ	1551	U
Methyl iodide	ND	0.40	2.0	ug/L	1	AA14664	01/26/21 13:03	01/28/21 13:13	EPA 524.2	LJJ	1551	U
Methyl isobutyl ketone	ND	0.90	1.0	ug/L	1	AA14664	01/26/21 13:03	01/28/21 13:13	EPA 524.2	LJJ	1551	U
Methylene chloride	ND	0.40	0.50	ug/L	1	AA14664	01/26/21 13:03	01/28/21 13:13	EPA 524.2	LJJ	1551	U
Naphthalene	ND	0.50	0.50	ug/L	1	AA14664	01/26/21 13:03	01/28/21 13:13	EPA 524.2	LJJ	1551	U
n-Propylbenzene	ND	0.50	0.50	ug/L	1	AA14664	01/26/21 13:03	01/28/21 13:13	EPA 524.2	LJJ	1551	U
Styrene	ND	0.20	0.50	ug/L	1	AA14664	01/26/21 13:03	01/28/21 13:13	EPA 524.2	LJJ	1551	U
1,1,1,2-Tetrachloroethane	ND	0.40	0.50	ug/L	1	AA14664	01/26/21 13:03	01/28/21 13:13	EPA 524.2	LJJ	1551	U
1,1,2,2-Tetrachloroethane	ND	0.20	0.50	ug/L	1	AA14664	01/26/21 13:03	01/28/21 13:13	EPA 524.2	LJJ	1551	U
Tetrachloroethene	ND	0.20	0.50	ug/L	1	AA14664	01/26/21 13:03	01/28/21 13:13	EPA 524.2	LJJ	1551	U
Toluene	ND	0.30	0.50	ug/L	1	AA14664	01/26/21 13:03	01/28/21 13:13	EPA 524.2	LJJ	1551	U
1,2,3-Trichlorobenzene	ND	0.40	0.50	ug/L	1	AA14664	01/26/21 13:03	01/28/21 13:13	EPA 524.2	LJJ	1551	U
1,2,4-Trichlorobenzene	ND	0.40	0.50	ug/L	1	AA14664	01/26/21 13:03	01/28/21 13:13	EPA 524.2	LJJ	1551	U
1,1,1-Trichloroethane	ND	0.40	0.50	ug/L	1	AA14664	01/26/21 13:03	01/28/21 13:13	EPA 524.2	LJJ	1551	U
1,1,2-Trichloroethane	ND	0.20	0.50	ug/L	1	AA14664	01/26/21 13:03	01/28/21 13:13	EPA 524.2	LJJ	1551	U
Trichloroethene	ND	0.30	0.50	ug/L	1	AA14664	01/26/21 13:03	01/28/21 13:13	EPA 524.2	LJJ	1551	U
Trichlorofluoromethane	ND	0.50	0.50	ug/L	1	AA14664	01/26/21 13:03	01/28/21 13:13	EPA 524.2	LJJ	1551	U
Trichlorotrifluoroethane	ND	0.40	0.50	ug/L	1	AA14664	01/26/21 13:03	01/28/21 13:13	EPA 524.2	LJJ	1551	U
1,2,3-Trichloropropane	ND	0.50	0.50	ug/L	1	AA14664	01/26/21 13:03	01/28/21 13:13	EPA 524.2	LJJ	1551	U
1,2,4-Trimethylbenzene	ND	0.50	0.50	ug/L	1	AA14664	01/26/21 13:03	01/28/21 13:13	EPA 524.2	LJJ	1551	U
1,3,5-Trimethylbenzene	ND	0.50	0.50	ug/L	1	AA14664	01/26/21 13:03	01/28/21 13:13	EPA 524.2	LJJ	1551	U
Vinyl chloride	ND	0.50	0.50	ug/L	1	AA14664	01/26/21 13:03	01/28/21 13:13	EPA 524.2	LJJ	1551	U
m,p-Xylene	ND	0.20	0.50	ug/L	1	AA14664	01/26/21 13:03	01/28/21 13:13	EPA 524.2	LJJ	1551	U
o-Xylene	ND	0.20	0.50	ug/L	1	AA14664	01/26/21 13:03	01/28/21 13:13	EPA 524.2	LJJ	1551	U
Xylenes (total)	ND	0.20	0.50	ug/L	1	AA14664	01/26/21 13:03	01/28/21 13:13	EPA 524.2	LJJ	1551	U
Trihalomethanes (total)	ND	0.30	0.50	ug/L	1	AA14664	01/26/21 13:03	01/28/21 13:13	EPA 524.2	LJJ	1551	U

The results in this report apply to the samples analyzed in accordance with the chain of custody document. This analytical report must be reproduced in its entirety.



Alpha Analytical Laboratories, Inc. email: clientservices@alpha-labs.com
 Corporate: 208 Mason Street | Ukiah, CA 95482 | T: 707-468-0401 | F: 707-468-5267 | ELAP# 1551

Sample Traps, LLC
 262 Rickenbacker Circle
 Livermore CA, 94551

Project Manager: Quality Control Manager
 Project: QC- 40ml Clear VOA- HCl
 Project Number: Silicone Batch #2020093003

Reported:
 02/03/21 09:42

Volatile Organic Compounds by EPA Method 524.2

Analyte	Result	MDL	Reporting Limit	Units	Dilution	Batch	Prepared	Analyzed	Method	Analyst	ELAP#	Notes
B1006CVBS - 02 (21A2001-02) Water Sampled: 01/14/21 00:00 Received: 01/14/21 09:00												
Methyl tert-butyl ether	ND	0.50	3.0	ug/L	1	AA14664	01/26/21 13:03	01/28/21 13:13	EPA 524.2	LJJ	1551	U
Ethyl tert-butyl ether	ND	0.40	0.50	ug/L	1	AA14664	01/26/21 13:03	01/28/21 13:13	EPA 524.2	LJJ	1551	U
Tert-amyl methyl ether	ND	0.30	0.50	ug/L	1	AA14664	01/26/21 13:03	01/28/21 13:13	EPA 524.2	LJJ	1551	U
Surrogate: Bromofluorobenzene		112 %	70-130			AA14664	01/26/21 13:03	01/28/21 13:13	EPA 524.2	LJJ	1551	
Surrogate: Dibromofluoromethane		102 %	70-130			AA14664	01/26/21 13:03	01/28/21 13:13	EPA 524.2	LJJ	1551	
Surrogate: Toluene-d8		113 %	70-130			AA14664	01/26/21 13:03	01/28/21 13:13	EPA 524.2	LJJ	1551	



Alpha Analytical Laboratories, Inc. email: clientservices@alpha-labs.com
 Corporate: 208 Mason Street | Ukiah, CA 95482 | T: 707-468-0401 | F: 707-468-5267 | ELAP# 1551

Sample Traps, LLC
 262 Rickenbacker Circle
 Livermore CA, 94551

Project Manager: Quality Control Manager
 Project: QC- 40ml Clear VOA- HCl
 Project Number: Silicone Batch #2020093003

Reported:
 02/03/21 09:42

Volatile Organic Compounds by EPA Method 8260B

Analyte	Result	MDL	Reporting Limit	Units	Dilution	Batch	Prepared	Analyzed	Method	Analyst	ELAP#	Notes
B1006CVBS - 01 (21A2001-01) Water Sampled: 01/14/21 00:00 Received: 01/14/21 09:00												
Acetone	ND	3.0	5.0	ug/L	1	AA14728	01/27/21 15:00	01/27/21 17:35	EPA 8260B	JV	1551	U
Acetonitrile	ND	50	100	ug/L	1	AA14728	01/27/21 15:00	01/27/21 17:35	EPA 8260B	JV	1551	U
Acrylonitrile	ND	0.40	5.0	ug/L	1	AA14728	01/27/21 15:00	01/27/21 17:35	EPA 8260B	JV	1551	U
Allyl chloride	ND	0.40	10	ug/L	1	AA14728	01/27/21 15:00	01/27/21 17:35	EPA 8260B	JV	1551	U
Benzene	ND	0.30	0.30	ug/L	1	AA14728	01/27/21 15:00	01/27/21 17:35	EPA 8260B	JV	1551	U
Bromobenzene	ND	0.40	0.50	ug/L	1	AA14728	01/27/21 15:00	01/27/21 17:35	EPA 8260B	JV	1551	U
Bromochloromethane	ND	0.40	0.50	ug/L	1	AA14728	01/27/21 15:00	01/27/21 17:35	EPA 8260B	JV	1551	U
Bromodichloromethane	ND	0.40	0.50	ug/L	1	AA14728	01/27/21 15:00	01/27/21 17:35	EPA 8260B	JV	1551	U
Bromoform	ND	0.30	0.50	ug/L	1	AA14728	01/27/21 15:00	01/27/21 17:35	EPA 8260B	JV	1551	U
Bromomethane	ND	0.40	0.50	ug/L	1	AA14728	01/27/21 15:00	01/27/21 17:35	EPA 8260B	JV	1551	U
n-Butylbenzene	ND	0.40	0.50	ug/L	1	AA14728	01/27/21 15:00	01/27/21 17:35	EPA 8260B	JV	1551	U
sec-Butylbenzene	ND	0.40	0.50	ug/L	1	AA14728	01/27/21 15:00	01/27/21 17:35	EPA 8260B	JV	1551	U
tert-Butylbenzene	ND	0.30	0.50	ug/L	1	AA14728	01/27/21 15:00	01/27/21 17:35	EPA 8260B	JV	1551	U
Carbon disulfide	ND	0.40	5.0	ug/L	1	AA14728	01/27/21 15:00	01/27/21 17:35	EPA 8260B	JV	1551	U
Carbon tetrachloride	ND	0.40	0.50	ug/L	1	AA14728	01/27/21 15:00	01/27/21 17:35	EPA 8260B	JV	1551	U
Chlorobenzene	ND	0.30	0.50	ug/L	1	AA14728	01/27/21 15:00	01/27/21 17:35	EPA 8260B	JV	1551	U
Chloroethane	ND	0.40	0.50	ug/L	1	AA14728	01/27/21 15:00	01/27/21 17:35	EPA 8260B	JV	1551	U
2-Chloroethylvinyl ether	ND	0.70	1.0	ug/L	1	AA14728	01/27/21 15:00	01/27/21 17:35	EPA 8260B	JV	1551	U
Chloroform	ND	0.40	0.50	ug/L	1	AA14728	01/27/21 15:00	01/27/21 17:35	EPA 8260B	JV	1551	U
Chloromethane	ND	0.40	0.50	ug/L	1	AA14728	01/27/21 15:00	01/27/21 17:35	EPA 8260B	JV	1551	U
Chloroprene	ND	0.40	1.0	ug/L	1	AA14728	01/27/21 15:00	01/27/21 17:35	EPA 8260B	JV	1551	U
2-Chlorotoluene	ND	0.40	0.50	ug/L	1	AA14728	01/27/21 15:00	01/27/21 17:35	EPA 8260B	JV	1551	U
4-Chlorotoluene	ND	0.30	0.50	ug/L	1	AA14728	01/27/21 15:00	01/27/21 17:35	EPA 8260B	JV	1551	U
Dibromochloromethane	ND	0.40	0.50	ug/L	1	AA14728	01/27/21 15:00	01/27/21 17:35	EPA 8260B	JV	1551	U
1,2-Dibromo-3-chloropropane	ND	0.60	2.0	ug/L	1	AA14728	01/27/21 15:00	01/27/21 17:35	EPA 8260B	JV	1551	U
1,2-Dibromoethane (EDB)	ND	0.40	0.50	ug/L	1	AA14728	01/27/21 15:00	01/27/21 17:35	EPA 8260B	JV	1551	U
Dibromomethane	ND	0.40	0.50	ug/L	1	AA14728	01/27/21 15:00	01/27/21 17:35	EPA 8260B	JV	1551	U
1,2-Dichlorobenzene	ND	0.40	0.50	ug/L	1	AA14728	01/27/21 15:00	01/27/21 17:35	EPA 8260B	JV	1551	U
1,3-Dichlorobenzene	ND	0.40	0.50	ug/L	1	AA14728	01/27/21 15:00	01/27/21 17:35	EPA 8260B	JV	1551	U
1,4-Dichlorobenzene	ND	0.10	0.50	ug/L	1	AA14728	01/27/21 15:00	01/27/21 17:35	EPA 8260B	JV	1551	U
trans-1,4-Dichloro-2-butene	ND	0.50	5.0	ug/L	1	AA14728	01/27/21 15:00	01/27/21 17:35	EPA 8260B	JV	1551	U
Dichlorodifluoromethane	ND	0.40	0.50	ug/L	1	AA14728	01/27/21 15:00	01/27/21 17:35	EPA 8260B	JV	1551	U
1,1-Dichloroethane	ND	0.30	0.50	ug/L	1	AA14728	01/27/21 15:00	01/27/21 17:35	EPA 8260B	JV	1551	U
1,2-Dichloroethane	ND	0.40	0.50	ug/L	1	AA14728	01/27/21 15:00	01/27/21 17:35	EPA 8260B	JV	1551	U
1,1-Dichloroethene	ND	0.30	0.50	ug/L	1	AA14728	01/27/21 15:00	01/27/21 17:35	EPA 8260B	JV	1551	U
cis-1,2-Dichloroethene	ND	0.40	0.50	ug/L	1	AA14728	01/27/21 15:00	01/27/21 17:35	EPA 8260B	JV	1551	U
trans-1,2-Dichloroethene	ND	0.40	0.50	ug/L	1	AA14728	01/27/21 15:00	01/27/21 17:35	EPA 8260B	JV	1551	U

The results in this report apply to the samples analyzed in accordance with the chain of custody document. This analytical report must be reproduced in its entirety.



Alpha Analytical Laboratories, Inc. email: clientservices@alpha-labs.com
 Corporate: 208 Mason Street | Ukiah, CA 95482 | T: 707-468-0401 | F: 707-468-5267 | ELAP# 1551

Sample Traps, LLC
 262 Rickenbacker Circle
 Livermore CA, 94551

Project Manager: Quality Control Manager
 Project: QC- 40ml Clear VOA- HCl
 Project Number: Silicone Batch #2020093003

Reported:
 02/03/21 09:42

Volatile Organic Compounds by EPA Method 8260B

Analyte	Result	MDL	Reporting Limit	Units	Dilution	Batch	Prepared	Analyzed	Method	Analyst	ELAP#	Notes
B1006CVBS - 01 (21A2001-01) Water Sampled: 01/14/21 00:00 Received: 01/14/21 09:00												
1,2-Dichloropropane	ND	0.40	0.50	ug/L	1	AA14728	01/27/21 15:00	01/27/21 17:35	EPA 8260B	JV	1551	U
1,3-Dichloropropane	ND	0.40	0.50	ug/L	1	AA14728	01/27/21 15:00	01/27/21 17:35	EPA 8260B	JV	1551	U
2,2-Dichloropropane	ND	0.50	0.50	ug/L	1	AA14728	01/27/21 15:00	01/27/21 17:35	EPA 8260B	JV	1551	U
1,1-Dichloropropene	ND	0.40	0.50	ug/L	1	AA14728	01/27/21 15:00	01/27/21 17:35	EPA 8260B	JV	1551	U
cis-1,3-Dichloropropene	ND	0.40	0.50	ug/L	1	AA14728	01/27/21 15:00	01/27/21 17:35	EPA 8260B	JV	1551	U
trans-1,3-Dichloropropene	ND	0.40	0.50	ug/L	1	AA14728	01/27/21 15:00	01/27/21 17:35	EPA 8260B	JV	1551	U
Diethyl ether	ND	0.20	1.0	ug/L	1	AA14728	01/27/21 15:00	01/27/21 17:35	EPA 8260B	JV	1551	U
Di-isopropyl ether	ND	0.40	0.50	ug/L	1	AA14728	01/27/21 15:00	01/27/21 17:35	EPA 8260B	JV	1551	U
Ethanol	ND	20	50	ug/L	1	AA14728	01/27/21 15:00	01/27/21 17:35	EPA 8260B	JV	1551	U
Ethyl methacrylate	ND	0.70	10	ug/L	1	AA14728	01/27/21 15:00	01/27/21 17:35	EPA 8260B	JV	1551	U
Ethylbenzene	ND	0.40	0.50	ug/L	1	AA14728	01/27/21 15:00	01/27/21 17:35	EPA 8260B	JV	1551	U
Ethyl tert-butyl ether	ND	0.40	0.50	ug/L	1	AA14728	01/27/21 15:00	01/27/21 17:35	EPA 8260B	JV	1551	U
Hexachlorobutadiene	ND	0.50	0.50	ug/L	1	AA14728	01/27/21 15:00	01/27/21 17:35	EPA 8260B	JV	1551	U
Hexachloroethane	ND	0.40	1.0	ug/L	1	AA14728	01/27/21 15:00	01/27/21 17:35	EPA 8260B	JV	1551	U
2-Hexanone	ND	0.50	5.0	ug/L	1	AA14728	01/27/21 15:00	01/27/21 17:35	EPA 8260B	JV	1551	U
Isobutanol	ND	40	100	ug/L	1	AA14728	01/27/21 15:00	01/27/21 17:35	EPA 8260B	JV	1551	U
Isopropylbenzene	ND	0.40	0.50	ug/L	1	AA14728	01/27/21 15:00	01/27/21 17:35	EPA 8260B	JV	1551	U
p-Isopropyltoluene	ND	0.40	0.50	ug/L	1	AA14728	01/27/21 15:00	01/27/21 17:35	EPA 8260B	JV	1551	U
Methacrylonitrile	ND	0.40	1.0	ug/L	1	AA14728	01/27/21 15:00	01/27/21 17:35	EPA 8260B	JV	1551	U
Methylene chloride	ND	0.50	0.50	ug/L	1	AA14728	01/27/21 15:00	01/27/21 17:35	EPA 8260B	JV	1551	U
Methyl ethyl ketone	ND	0.70	1.0	ug/L	1	AA14728	01/27/21 15:00	01/27/21 17:35	EPA 8260B	JV	1551	U
Methyl iodide	ND	0.40	2.0	ug/L	1	AA14728	01/27/21 15:00	01/27/21 17:35	EPA 8260B	JV	1551	U
Methyl isobutyl ketone	ND	0.60	1.0	ug/L	1	AA14728	01/27/21 15:00	01/27/21 17:35	EPA 8260B	JV	1551	U
Methyl methacrylate	ND	0.40	1.0	ug/L	1	AA14728	01/27/21 15:00	01/27/21 17:35	EPA 8260B	JV	1551	U
Methyl tert-butyl ether	ND	0.50	0.50	ug/L	1	AA14728	01/27/21 15:00	01/27/21 17:35	EPA 8260B	JV	1551	U
Naphthalene	ND	0.50	0.50	ug/L	1	AA14728	01/27/21 15:00	01/27/21 17:35	EPA 8260B	JV	1551	U
Propionitrile	ND	20	50	ug/L	1	AA14728	01/27/21 15:00	01/27/21 17:35	EPA 8260B	JV	1551	U
n-Propylbenzene	ND	0.40	0.50	ug/L	1	AA14728	01/27/21 15:00	01/27/21 17:35	EPA 8260B	JV	1551	U
Styrene	ND	0.40	0.50	ug/L	1	AA14728	01/27/21 15:00	01/27/21 17:35	EPA 8260B	JV	1551	U
Tert-amyl methyl ether	ND	0.40	0.50	ug/L	1	AA14728	01/27/21 15:00	01/27/21 17:35	EPA 8260B	JV	1551	U
Tert-butyl alcohol	ND	6.0	10	ug/L	1	AA14728	01/27/21 15:00	01/27/21 17:35	EPA 8260B	JV	1551	U
1,1,1,2-Tetrachloroethane	ND	0.40	0.50	ug/L	1	AA14728	01/27/21 15:00	01/27/21 17:35	EPA 8260B	JV	1551	U
1,1,2,2-Tetrachloroethane	ND	0.30	0.50	ug/L	1	AA14728	01/27/21 15:00	01/27/21 17:35	EPA 8260B	JV	1551	U
Tetrachloroethene	ND	0.40	0.50	ug/L	1	AA14728	01/27/21 15:00	01/27/21 17:35	EPA 8260B	JV	1551	U
Tetrahydrofuran	ND	0.40	5.0	ug/L	1	AA14728	01/27/21 15:00	01/27/21 17:35	EPA 8260B	JV	1551	U
Toluene	ND	0.30	0.30	ug/L	1	AA14728	01/27/21 15:00	01/27/21 17:35	EPA 8260B	JV	1551	U
1,2,3-Trichlorobenzene	ND	0.50	0.50	ug/L	1	AA14728	01/27/21 15:00	01/27/21 17:35	EPA 8260B	JV	1551	U

The results in this report apply to the samples analyzed in accordance with the chain of custody document. This analytical report must be reproduced in its entirety.



Alpha Analytical Laboratories, Inc. email: clientservices@alpha-labs.com
 Corporate: 208 Mason Street | Ukiah, CA 95482 | T: 707-468-0401 | F: 707-468-5267 | ELAP# 1551

Sample Traps, LLC
 262 Rickenbacker Circle
 Livermore CA, 94551

Project Manager: Quality Control Manager
 Project: QC- 40ml Clear VOA- HCl
 Project Number: Silicone Batch #2020093003

Reported:
 02/03/21 09:42

Volatile Organic Compounds by EPA Method 8260B

Analyte	Result	MDL	Reporting Limit	Units	Dilution	Batch	Prepared	Analyzed	Method	Analyst	ELAP#	Notes
B1006CVBS - 01 (21A2001-01) Water Sampled: 01/14/21 00:00 Received: 01/14/21 09:00												
1,2,4-Trichlorobenzene	ND	0.50	0.50	ug/L	1	AA14728	01/27/21 15:00	01/27/21 17:35	EPA 8260B	JV	1551	U
1,1,1-Trichloroethane	ND	0.40	0.50	ug/L	1	AA14728	01/27/21 15:00	01/27/21 17:35	EPA 8260B	JV	1551	U
1,1,2-Trichloroethane	ND	0.40	0.50	ug/L	1	AA14728	01/27/21 15:00	01/27/21 17:35	EPA 8260B	JV	1551	U
Trichloroethene	ND	0.40	0.50	ug/L	1	AA14728	01/27/21 15:00	01/27/21 17:35	EPA 8260B	JV	1551	U
Trichlorofluoromethane	ND	0.20	0.50	ug/L	1	AA14728	01/27/21 15:00	01/27/21 17:35	EPA 8260B	JV	1551	U
1,2,3-Trichloropropane	ND	0.40	0.50	ug/L	1	AA14728	01/27/21 15:00	01/27/21 17:35	EPA 8260B	JV	1551	U
Trichlorotrifluoroethane	ND	0.20	0.50	ug/L	1	AA14728	01/27/21 15:00	01/27/21 17:35	EPA 8260B	JV	1551	U
1,2,4-Trimethylbenzene	ND	0.40	0.50	ug/L	1	AA14728	01/27/21 15:00	01/27/21 17:35	EPA 8260B	JV	1551	U
1,3,5-Trimethylbenzene	ND	0.30	0.50	ug/L	1	AA14728	01/27/21 15:00	01/27/21 17:35	EPA 8260B	JV	1551	U
Vinyl acetate	ND	0.80	1.0	ug/L	1	AA14728	01/27/21 15:00	01/27/21 17:35	EPA 8260B	JV	1551	U
Vinyl chloride	ND	0.40	0.50	ug/L	1	AA14728	01/27/21 15:00	01/27/21 17:35	EPA 8260B	JV	1551	U
m,p-Xylene	ND	0.50	0.50	ug/L	1	AA14728	01/27/21 15:00	01/27/21 17:35	EPA 8260B	JV	1551	U
o-Xylene	ND	0.40	0.50	ug/L	1	AA14728	01/27/21 15:00	01/27/21 17:35	EPA 8260B	JV	1551	U
Xylenes (total)	ND	0.50	0.50	ug/L	1	AA14728	01/27/21 15:00	01/27/21 17:35	EPA 8260B	JV	1551	U
Surrogate: Bromofluorobenzene		110 %	70-130			AA14728	01/27/21 15:00	01/27/21 17:35	EPA 8260B	JV	1551	
Surrogate: Dibromofluoromethane		106 %	70-130			AA14728	01/27/21 15:00	01/27/21 17:35	EPA 8260B	JV	1551	
Surrogate: Toluene-d8		111 %	70-130			AA14728	01/27/21 15:00	01/27/21 17:35	EPA 8260B	JV	1551	



Alpha Analytical Laboratories, Inc. email: clientservices@alpha-labs.com
 Corporate: 208 Mason Street | Ukiah, CA 95482 | T: 707-468-0401 | F: 707-468-5267 | ELAP# 1551

Sample Traps, LLC 262 Rickenbacker Circle Livermore CA, 94551	Project Manager: Quality Control Manager Project: QC- 40ml Clear VOA- HCl Project Number: Silicone Batch #2020093003	Reported: 02/03/21 09:42
---------------------------------------------------------------------	----------------------------------------------------------------------------------------------------------------------------	-----------------------------

Volatile Organic Compounds by EPA Method 524.2 - Quality Control

Analyte	Result	MDL	Reporting Limit	Units	Spike Level	Source Result	%REC	%REC Limits	RPD	RPD Limit	Notes
---------	--------	-----	-----------------	-------	-------------	---------------	------	-------------	-----	-----------	-------

Batch AA14664 - VOAs in Water GCMS

Blank (AA14664-BLK1)

Prepared: 01/26/21 Analyzed: 01/27/21

Acetone	ND	2.0	5.0	ug/L							U
Acrylonitrile	ND	0.40	5.0	ug/L							U
Benzene	ND	0.10	0.30	ug/L							U
Bromobenzene	ND	0.20	0.50	ug/L							U
Bromochloromethane	ND	0.40	0.50	ug/L							U
Bromodichloromethane	ND	0.20	0.50	ug/L							U
Bromoform	ND	0.30	0.50	ug/L							U
Bromomethane	ND	0.40	0.50	ug/L							U
n-Butylbenzene	ND	0.50	0.50	ug/L							U
sec-Butylbenzene	ND	0.20	0.50	ug/L							U
tert-Butylbenzene	ND	0.50	0.50	ug/L							U
Carbon disulfide	ND	0.40	0.50	ug/L							U
Carbon tetrachloride	ND	0.30	0.50	ug/L							U
Chlorobenzene	ND	0.20	0.50	ug/L							U
Chloroethane	ND	0.30	0.50	ug/L							U
Chloroform	ND	0.30	0.50	ug/L							U
Chloromethane	ND	0.40	0.50	ug/L							U
2-Chlorotoluene	ND	0.20	0.50	ug/L							U
4-Chlorotoluene	ND	0.20	0.50	ug/L							U
Dibromochloromethane	ND	0.30	0.50	ug/L							U
1,2-Dibromo-3-chloropropane	ND	0.50	0.50	ug/L							U
1,2-Dibromoethane (EDB)	ND	0.50	0.50	ug/L							U
Dibromomethane	ND	0.20	0.50	ug/L							U
1,2-Dichlorobenzene	ND	0.20	0.50	ug/L							U
1,3-Dichlorobenzene	ND	0.20	0.50	ug/L							U
1,4-Dichlorobenzene	ND	0.20	0.50	ug/L							U
trans-1,4-Dichloro-2-butene	ND	0.90	5.0	ug/L							U
Dichlorodifluoromethane	ND	0.50	0.50	ug/L							U
1,1-Dichloroethane	ND	0.20	0.50	ug/L							U
1,2-Dichloroethane	ND	0.10	0.50	ug/L							U
1,1-Dichloroethene	ND	0.30	0.30	ug/L							U
cis-1,2-Dichloroethene	ND	0.10	0.50	ug/L							U
trans-1,2-Dichloroethene	ND	0.10	0.50	ug/L							U
1,2-Dichloropropane	ND	0.20	0.50	ug/L							U
1,3-Dichloropropane	ND	0.10	0.50	ug/L							U
2,2-Dichloropropane	ND	0.30	0.50	ug/L							U

The results in this report apply to the samples analyzed in accordance with the chain of custody document. This analytical report must be reproduced in its entirety.



Alpha Analytical Laboratories, Inc. email: clientservices@alpha-labs.com
 Corporate: 208 Mason Street | Ukiah, CA 95482 | T: 707-468-0401 | F: 707-468-5267 | ELAP# 1551

Sample Traps, LLC 262 Rickenbacker Circle Livermore CA, 94551	Project Manager: Quality Control Manager Project: QC- 40ml Clear VOA- HCl Project Number: Silicone Batch #2020093003	Reported: 02/03/21 09:42
---------------------------------------------------------------------	----------------------------------------------------------------------------------------------------------------------------	-----------------------------

Volatile Organic Compounds by EPA Method 524.2 - Quality Control

Analyte	Result	MDL	Reporting Limit	Units	Spike Level	Source Result	%REC	%REC Limits	RPD	RPD Limit	Notes
---------	--------	-----	-----------------	-------	-------------	---------------	------	-------------	-----	-----------	-------

Batch AA14664 - VOAs in Water GCMS

Blank (AA14664-BLK1)

Prepared: 01/26/21 Analyzed: 01/27/21

1,1-Dichloropropene	ND	0.20	0.50	ug/L							U
cis-1,3-Dichloropropene	ND	0.30	0.50	ug/L							U
trans-1,3-Dichloropropene	ND	0.30	0.50	ug/L							U
1,3-Dichloropropene (total)	ND	0.30	0.50	ug/L							U
Ethylbenzene	ND	0.20	0.50	ug/L							U
2-Hexanone	ND	0.50	5.0	ug/L							U
Hexachlorobutadiene	ND	0.40	0.50	ug/L							U
Isopropylbenzene	ND	0.20	0.50	ug/L							U
p-Isopropyltoluene	ND	0.50	0.50	ug/L							U
Methyl ethyl ketone	ND	0.20	1.0	ug/L							U
Methyl iodide	ND	0.40	2.0	ug/L							U
Methyl isobutyl ketone	ND	0.90	1.0	ug/L							U
Methylene chloride	ND	0.40	0.50	ug/L							U
Naphthalene	ND	0.50	0.50	ug/L							U
n-Propylbenzene	ND	0.50	0.50	ug/L							U
Styrene	ND	0.20	0.50	ug/L							U
1,1,1,2-Tetrachloroethane	ND	0.40	0.50	ug/L							U
1,1,2,2-Tetrachloroethane	ND	0.20	0.50	ug/L							U
Tetrachloroethene	ND	0.20	0.50	ug/L							U
Toluene	ND	0.30	0.50	ug/L							U
1,2,3-Trichlorobenzene	ND	0.40	0.50	ug/L							U
1,2,4-Trichlorobenzene	ND	0.40	0.50	ug/L							U
1,1,1-Trichloroethane	ND	0.40	0.50	ug/L							U
1,1,2-Trichloroethane	ND	0.20	0.50	ug/L							U
Trichloroethene	ND	0.30	0.50	ug/L							U
Trichlorofluoromethane	ND	0.50	0.50	ug/L							U
Trichlorotrifluoroethane	ND	0.40	0.50	ug/L							U
1,2,3-Trichloropropane	ND	0.50	0.50	ug/L							U
1,2,4-Trimethylbenzene	ND	0.50	0.50	ug/L							U
1,3,5-Trimethylbenzene	ND	0.50	0.50	ug/L							U
Vinyl chloride	ND	0.50	0.50	ug/L							U
m,p-Xylene	ND	0.20	0.50	ug/L							U
o-Xylene	ND	0.20	0.50	ug/L							U
Xylenes (total)	ND	0.20	0.50	ug/L							U
Trihalomethanes (total)	ND	0.30	0.50	ug/L							U
Methyl tert-butyl ether	ND	0.50	3.0	ug/L							U

The results in this report apply to the samples analyzed in accordance with the chain of custody document. This analytical report must be reproduced in its entirety.



Alpha Analytical Laboratories, Inc. email: clientservices@alpha-labs.com
 Corporate: 208 Mason Street | Ukiah, CA 95482 | T: 707-468-0401 | F: 707-468-5267 | ELAP# 1551

Sample Traps, LLC 262 Rickenbacker Circle Livermore CA, 94551	Project Manager: Quality Control Manager Project: QC- 40ml Clear VOA- HCl Project Number: Silicone Batch #2020093003	Reported: 02/03/21 09:42
---------------------------------------------------------------------	----------------------------------------------------------------------------------------------------------------------------	-----------------------------

Volatile Organic Compounds by EPA Method 524.2 - Quality Control

Analyte	Result	MDL	Reporting Limit	Units	Spike Level	Source Result	%REC	%REC Limits	RPD	RPD Limit	Notes
---------	--------	-----	-----------------	-------	-------------	---------------	------	-------------	-----	-----------	-------

Batch AA14664 - VOAs in Water GCMS

Blank (AA14664-BLK1)

Prepared: 01/26/21 Analyzed: 01/27/21

Ethyl tert-butyl ether	ND	0.40	0.50	ug/L							U
Tert-amyl methyl ether	ND	0.30	0.50	ug/L							U
Surrogate: Bromofluorobenzene	29.7			ug/L	25.0		119	70-130			
Surrogate: Dibromofluoromethane	26.6			ug/L	25.0		106	70-130			
Surrogate: Toluene-d8	27.4			ug/L	25.0		110	70-130			

LCS (AA14664-BS1)

Prepared: 01/26/21 Analyzed: 01/27/21

Acetone	21.9	2.0	5.0	ug/L	20.0		110	70-130			
Acrylonitrile	5.21	0.40	5.0	ug/L	5.00		104	70-130			
Benzene	4.88	0.10	0.30	ug/L	5.00		97.6	70-130			
Bromobenzene	5.09	0.20	0.50	ug/L	5.00		102	70-130			
Bromochloromethane	4.59	0.40	0.50	ug/L	5.00		91.8	70-130			
Bromodichloromethane	5.19	0.20	0.50	ug/L	5.00		104	70-130			
Bromoform	4.66	0.30	0.50	ug/L	5.00		93.2	70-130			
Bromomethane	4.92	0.40	0.50	ug/L	5.00		98.4	70-130			
n-Butylbenzene	5.28	0.50	0.50	ug/L	5.00		106	70-130			
sec-Butylbenzene	5.31	0.20	0.50	ug/L	5.00		106	70-130			
tert-Butylbenzene	5.34	0.50	0.50	ug/L	5.00		107	70-130			
Carbon disulfide	4.29	0.40	0.50	ug/L	5.00		85.8	70-130			
Carbon tetrachloride	5.05	0.30	0.50	ug/L	5.00		101	70-130			
Chlorobenzene	4.98	0.20	0.50	ug/L	5.00		99.6	70-130			
Chloroethane	4.48	0.30	0.50	ug/L	5.00		89.6	70-130			
Chloroform	5.19	0.30	0.50	ug/L	5.00		104	70-130			
Chloromethane	5.82	0.40	0.50	ug/L	5.00		116	70-130			
2-Chlorotoluene	5.15	0.20	0.50	ug/L	5.00		103	70-130			
4-Chlorotoluene	5.06	0.20	0.50	ug/L	5.00		101	70-130			
Dibromochloromethane	5.08	0.30	0.50	ug/L	5.00		102	70-130			
1,2-Dibromo-3-chloropropane	5.04	0.50	0.50	ug/L	5.00		101	70-130			
1,2-Dibromoethane (EDB)	4.82	0.50	0.50	ug/L	5.00		96.4	70-130			
Dibromomethane	4.52	0.20	0.50	ug/L	5.00		90.4	70-130			
1,2-Dichlorobenzene	4.90	0.20	0.50	ug/L	5.00		98.0	70-130			
1,3-Dichlorobenzene	5.15	0.20	0.50	ug/L	5.00		103	70-130			
1,4-Dichlorobenzene	4.71	0.20	0.50	ug/L	5.00		94.2	70-130			
trans-1,4-Dichloro-2-butene	4.61	0.90	5.0	ug/L	5.00		92.2	70-130			J
Dichlorodifluoromethane	5.75	0.50	0.50	ug/L	5.00		115	70-130			
1,1-Dichloroethane	4.67	0.20	0.50	ug/L	5.00		93.4	70-130			
1,2-Dichloroethane	4.42	0.10	0.50	ug/L	5.00		88.4	70-130			

The results in this report apply to the samples analyzed in accordance with the chain of custody document. This analytical report must be reproduced in its entirety.



Alpha Analytical Laboratories, Inc. email: clientservices@alpha-labs.com
 Corporate: 208 Mason Street | Ukiah, CA 95482 | T: 707-468-0401 | F: 707-468-5267 | ELAP# 1551

Sample Traps, LLC 262 Rickenbacker Circle Livermore CA, 94551	Project Manager: Quality Control Manager Project: QC- 40ml Clear VOA- HCl Project Number: Silicone Batch #2020093003	Reported: 02/03/21 09:42
---------------------------------------------------------------------	----------------------------------------------------------------------------------------------------------------------------	-----------------------------

Volatile Organic Compounds by EPA Method 524.2 - Quality Control

Analyte	Result	MDL	Reporting Limit	Units	Spike Level	Source Result	%REC	%REC Limits	RPD	RPD Limit	Notes
---------	--------	-----	-----------------	-------	-------------	---------------	------	-------------	-----	-----------	-------

Batch AA14664 - VOAs in Water GCMS

LCS (AA14664-BS1)

Prepared: 01/26/21 Analyzed: 01/27/21

1,1-Dichloroethene	4.88	0.30	0.30	ug/L	5.00		97.6	70-130			
cis-1,2-Dichloroethene	4.43	0.10	0.50	ug/L	5.00		88.6	70-130			
trans-1,2-Dichloroethene	4.62	0.10	0.50	ug/L	5.00		92.4	70-130			
1,2-Dichloropropane	4.74	0.20	0.50	ug/L	5.00		94.8	70-130			
1,3-Dichloropropane	4.99	0.10	0.50	ug/L	5.00		99.8	70-130			
2,2-Dichloropropane	3.53	0.30	0.50	ug/L	5.00		70.6	70-130			
1,1-Dichloropropene	5.15	0.20	0.50	ug/L	5.00		103	70-130			
cis-1,3-Dichloropropene	4.87	0.30	0.50	ug/L	5.00		97.4	70-130			
trans-1,3-Dichloropropene	4.78	0.30	0.50	ug/L	5.00		95.6	70-130			
2-Hexanone	5.40	0.50	5.0	ug/L	5.00		108	70-130			
Ethylbenzene	4.89	0.20	0.50	ug/L	5.00		97.8	70-130			
Hexachlorobutadiene	5.04	0.40	0.50	ug/L	5.00		101	70-130			
Isopropylbenzene	5.41	0.20	0.50	ug/L	5.00		108	70-130			
p-Isopropyltoluene	5.34	0.50	0.50	ug/L	5.00		107	70-130			
Methyl ethyl ketone	7.76	0.20	1.0	ug/L	10.0		77.6	70-130			
Methyl iodide	5.73	0.40	2.0	ug/L	5.00		115	70-130			
Methyl isobutyl ketone	10.4	0.90	1.0	ug/L	10.0		104	70-130			
Methylene chloride	5.20	0.40	0.50	ug/L	5.00		104	70-130			
Naphthalene	5.31	0.50	0.50	ug/L	5.00		106	70-130			
n-Propylbenzene	5.19	0.50	0.50	ug/L	5.00		104	70-130			
Styrene	5.01	0.20	0.50	ug/L	5.00		100	70-130			
1,1,1,2-Tetrachloroethane	4.06	0.40	0.50	ug/L	5.00		81.2	70-130			
1,1,2,2-Tetrachloroethane	4.63	0.20	0.50	ug/L	5.00		92.6	70-130			
Tetrachloroethene	5.18	0.20	0.50	ug/L	5.00		104	70-130			
Toluene	4.97	0.30	0.50	ug/L	5.00		99.4	70-130			
1,2,3-Trichlorobenzene	4.92	0.40	0.50	ug/L	5.00		98.4	70-130			
1,2,4-Trichlorobenzene	4.76	0.40	0.50	ug/L	5.00		95.2	70-130			
1,1,1-Trichloroethane	4.92	0.40	0.50	ug/L	5.00		98.4	70-130			
1,1,2-Trichloroethane	4.78	0.20	0.50	ug/L	5.00		95.6	70-130			
Trichloroethene	5.01	0.30	0.50	ug/L	5.00		100	70-130			
Trichlorofluoromethane	5.42	0.50	0.50	ug/L	5.00		108	70-130			
Trichlorotrifluoroethane	6.08	0.40	0.50	ug/L	5.00		122	70-130			
1,2,3-Trichloropropane	5.15	0.50	0.50	ug/L	5.00		103	70-130			
1,2,4-Trimethylbenzene	5.22	0.50	0.50	ug/L	5.00		104	70-130			
1,3,5-Trimethylbenzene	5.13	0.50	0.50	ug/L	5.00		103	70-130			
Vinyl chloride	4.96	0.50	0.50	ug/L	5.00		99.2	70-130			

The results in this report apply to the samples analyzed in accordance with the chain of custody document. This analytical report must be reproduced in its entirety.



Alpha Analytical Laboratories, Inc. email: clientservices@alpha-labs.com
 Corporate: 208 Mason Street | Ukiah, CA 95482 | T: 707-468-0401 | F: 707-468-5267 | ELAP# 1551

Sample Traps, LLC 262 Rickenbacker Circle Livermore CA, 94551	Project Manager: Quality Control Manager Project: QC- 40ml Clear VOA- HCl Project Number: Silicone Batch #2020093003	Reported: 02/03/21 09:42
---------------------------------------------------------------------	----------------------------------------------------------------------------------------------------------------------------	-----------------------------

Volatile Organic Compounds by EPA Method 524.2 - Quality Control

Analyte	Result	MDL	Reporting Limit	Units	Spike Level	Source Result	%REC	%REC Limits	RPD	RPD Limit	Notes
---------	--------	-----	-----------------	-------	-------------	---------------	------	-------------	-----	-----------	-------

Batch AA14664 - VOAs in Water GCMS

LCS (AA14664-BS1)

Prepared: 01/26/21 Analyzed: 01/27/21

m,p-Xylene	10.2	0.20	0.50	ug/L	10.0	102	70-130				
o-Xylene	5.05	0.20	0.50	ug/L	5.00	101	70-130				
Xylenes (total)	15.3	0.20	0.50	ug/L	15.0	102	70-130				
Methyl tert-butyl ether	5.72	0.50	3.0	ug/L	5.00	114	70-130				
Ethyl tert-butyl ether	5.44	0.40	0.50	ug/L	5.00	109	70-130				
Tert-amyl methyl ether	5.93	0.30	0.50	ug/L	5.00	119	70-130				
Surrogate: Bromofluorobenzene	30.0			ug/L	25.0	120	70-130				
Surrogate: Dibromofluoromethane	25.6			ug/L	25.0	102	70-130				
Surrogate: Toluene-d8	28.5			ug/L	25.0	114	70-130				

LCS Dup (AA14664-BSD1)

Prepared: 01/26/21 Analyzed: 01/27/21

Acetone	23.9	2.0	5.0	ug/L	20.0	120	70-130	8.63	30		
Acrylonitrile	5.25	0.40	5.0	ug/L	5.00	105	70-130	0.765	30		
Benzene	5.09	0.10	0.30	ug/L	5.00	102	70-130	4.21	30		
Bromobenzene	4.99	0.20	0.50	ug/L	5.00	99.8	70-130	1.98	30		
Bromochloromethane	5.06	0.40	0.50	ug/L	5.00	101	70-130	9.74	30		
Bromodichloromethane	5.70	0.20	0.50	ug/L	5.00	114	70-130	9.37	30		
Bromoform	4.68	0.30	0.50	ug/L	5.00	93.6	70-130	0.428	30		
Bromomethane	4.78	0.40	0.50	ug/L	5.00	95.6	70-130	2.89	30		
n-Butylbenzene	5.28	0.50	0.50	ug/L	5.00	106	70-130	0.00	30		
sec-Butylbenzene	5.19	0.20	0.50	ug/L	5.00	104	70-130	2.29	30		
tert-Butylbenzene	5.18	0.50	0.50	ug/L	5.00	104	70-130	3.04	30		
Carbon disulfide	4.41	0.40	0.50	ug/L	5.00	88.2	70-130	2.76	30		
Carbon tetrachloride	5.65	0.30	0.50	ug/L	5.00	113	70-130	11.2	30		
Chlorobenzene	4.88	0.20	0.50	ug/L	5.00	97.6	70-130	2.03	30		
Chloroethane	4.23	0.30	0.50	ug/L	5.00	84.6	70-130	5.74	30		
Chloroform	5.10	0.30	0.50	ug/L	5.00	102	70-130	1.75	30		
Chloromethane	5.84	0.40	0.50	ug/L	5.00	117	70-130	0.343	30		
2-Chlorotoluene	5.09	0.20	0.50	ug/L	5.00	102	70-130	1.17	30		
4-Chlorotoluene	4.94	0.20	0.50	ug/L	5.00	98.8	70-130	2.40	30		
Dibromochloromethane	5.02	0.30	0.50	ug/L	5.00	100	70-130	1.19	30		
1,2-Dibromo-3-chloropropane	5.13	0.50	0.50	ug/L	5.00	103	70-130	1.77	25		
1,2-Dibromoethane (EDB)	4.68	0.50	0.50	ug/L	5.00	93.6	70-130	2.95	25		
Dibromomethane	5.02	0.20	0.50	ug/L	5.00	100	70-130	10.5	30		
1,2-Dichlorobenzene	4.81	0.20	0.50	ug/L	5.00	96.2	70-130	1.85	30		
1,3-Dichlorobenzene	4.97	0.20	0.50	ug/L	5.00	99.4	70-130	3.56	30		
1,4-Dichlorobenzene	4.66	0.20	0.50	ug/L	5.00	93.2	70-130	1.07	30		

The results in this report apply to the samples analyzed in accordance with the chain of custody document. This analytical report must be reproduced in its entirety.



Alpha Analytical Laboratories, Inc. email: clientservices@alpha-labs.com
 Corporate: 208 Mason Street | Ukiah, CA 95482 | T: 707-468-0401 | F: 707-468-5267 | ELAP# 1551

Sample Traps, LLC 262 Rickenbacker Circle Livermore CA, 94551	Project Manager: Quality Control Manager Project: QC- 40ml Clear VOA- HCl Project Number: Silicone Batch #2020093003	Reported: 02/03/21 09:42
---------------------------------------------------------------------	----------------------------------------------------------------------------------------------------------------------------	-----------------------------

Volatile Organic Compounds by EPA Method 524.2 - Quality Control

Analyte	Result	MDL	Reporting Limit	Units	Spike Level	Source Result	%REC	%REC Limits	RPD	RPD Limit	Notes
---------	--------	-----	-----------------	-------	-------------	---------------	------	-------------	-----	-----------	-------

Batch AA14664 - VOAs in Water GCMS

LCS Dup (AA14664-BSD1)

Prepared: 01/26/21 Analyzed: 01/27/21

trans-1,4-Dichloro-2-butene	4.55	0.90	5.0	ug/L	5.00		91.0	70-130	1.31	25	J
Dichlorodifluoromethane	5.34	0.50	0.50	ug/L	5.00		107	70-130	7.39	30	
1,1-Dichloroethane	4.91	0.20	0.50	ug/L	5.00		98.2	70-130	5.01	30	
1,2-Dichloroethane	4.61	0.10	0.50	ug/L	5.00		92.2	70-130	4.21	30	
1,1-Dichloroethene	5.13	0.30	0.30	ug/L	5.00		103	70-130	5.00	30	
cis-1,2-Dichloroethene	4.83	0.10	0.50	ug/L	5.00		96.6	70-130	8.64	30	
trans-1,2-Dichloroethene	4.73	0.10	0.50	ug/L	5.00		94.6	70-130	2.35	30	
1,2-Dichloropropane	5.02	0.20	0.50	ug/L	5.00		100	70-130	5.74	30	
1,3-Dichloropropane	4.84	0.10	0.50	ug/L	5.00		96.8	70-130	3.05	30	
2,2-Dichloropropane	3.58	0.30	0.50	ug/L	5.00		71.6	70-130	1.41	30	
1,1-Dichloropropene	5.41	0.20	0.50	ug/L	5.00		108	70-130	4.92	30	
cis-1,3-Dichloropropene	4.99	0.30	0.50	ug/L	5.00		99.8	70-130	2.43	30	
trans-1,3-Dichloropropene	4.65	0.30	0.50	ug/L	5.00		93.0	70-130	2.76	30	
Ethylbenzene	4.82	0.20	0.50	ug/L	5.00		96.4	70-130	1.44	30	
2-Hexanone	4.98	0.50	5.0	ug/L	5.00		99.6	70-130	8.09	25	J
Hexachlorobutadiene	5.24	0.40	0.50	ug/L	5.00		105	70-130	3.89	30	
Isopropylbenzene	5.26	0.20	0.50	ug/L	5.00		105	70-130	2.81	30	
p-Isopropyltoluene	5.20	0.50	0.50	ug/L	5.00		104	70-130	2.66	30	
Methyl ethyl ketone	8.91	0.20	1.0	ug/L	10.0		89.1	70-130	13.8	30	
Methyl iodide	5.96	0.40	2.0	ug/L	5.00		119	70-130	3.93	25	
Methyl isobutyl ketone	10.6	0.90	1.0	ug/L	10.0		106	70-130	2.00	30	
Methylene chloride	5.51	0.40	0.50	ug/L	5.00		110	70-130	5.79	30	
Naphthalene	5.59	0.50	0.50	ug/L	5.00		112	70-130	5.14	30	
n-Propylbenzene	5.12	0.50	0.50	ug/L	5.00		102	70-130	1.36	30	
Styrene	4.81	0.20	0.50	ug/L	5.00		96.2	70-130	4.07	30	
1,1,1,2-Tetrachloroethane	4.17	0.40	0.50	ug/L	5.00		83.4	70-130	2.67	30	
1,1,2,2-Tetrachloroethane	4.51	0.20	0.50	ug/L	5.00		90.2	70-130	2.63	30	
Tetrachloroethene	5.08	0.20	0.50	ug/L	5.00		102	70-130	1.95	30	
Toluene	4.94	0.30	0.50	ug/L	5.00		98.8	70-130	0.605	30	
1,2,3-Trichlorobenzene	5.19	0.40	0.50	ug/L	5.00		104	70-130	5.34	30	
1,2,4-Trichlorobenzene	4.90	0.40	0.50	ug/L	5.00		98.0	70-130	2.90	30	
1,1,1-Trichloroethane	5.30	0.40	0.50	ug/L	5.00		106	70-130	7.44	30	
1,1,2-Trichloroethane	4.66	0.20	0.50	ug/L	5.00		93.2	70-130	2.54	30	
Trichloroethene	5.34	0.30	0.50	ug/L	5.00		107	70-130	6.38	30	
Trichlorofluoromethane	5.17	0.50	0.50	ug/L	5.00		103	70-130	4.72	30	
Trichlorotrifluoroethane	5.96	0.40	0.50	ug/L	5.00		119	70-130	1.99	30	

The results in this report apply to the samples analyzed in accordance with the chain of custody document. This analytical report must be reproduced in its entirety.



Alpha Analytical Laboratories, Inc. email: clientservices@alpha-labs.com
 Corporate: 208 Mason Street | Ukiah, CA 95482 | T: 707-468-0401 | F: 707-468-5267 | ELAP# 1551

Sample Traps, LLC 262 Rickenbacker Circle Livermore CA, 94551	Project Manager: Quality Control Manager Project: QC- 40ml Clear VOA- HCl Project Number: Silicone Batch #2020093003	Reported: 02/03/21 09:42
---------------------------------------------------------------------	----------------------------------------------------------------------------------------------------------------------------	-----------------------------

Volatile Organic Compounds by EPA Method 524.2 - Quality Control

Analyte	Result	MDL	Reporting Limit	Units	Spike Level	Source Result	%REC	%REC Limits	RPD	RPD Limit	Notes
---------	--------	-----	-----------------	-------	-------------	---------------	------	-------------	-----	-----------	-------

Batch AA14664 - VOAs in Water GCMS

LCS Dup (AA14664-BSD1)

Prepared: 01/26/21 Analyzed: 01/27/21

1,2,3-Trichloropropane	4.84	0.50	0.50	ug/L	5.00		96.8	70-130	6.21	25	
1,2,4-Trimethylbenzene	5.06	0.50	0.50	ug/L	5.00		101	70-130	3.11	30	
1,3,5-Trimethylbenzene	5.00	0.50	0.50	ug/L	5.00		100	70-130	2.57	30	
Vinyl chloride	5.33	0.50	0.50	ug/L	5.00		107	70-130	7.19	30	
m,p-Xylene	10.1	0.20	0.50	ug/L	10.0		101	70-130	1.18	30	
o-Xylene	4.87	0.20	0.50	ug/L	5.00		97.4	70-130	3.63	30	
Xylenes (total)	15.0	0.20	0.50	ug/L	15.0		99.7	70-130	1.99	30	
Methyl tert-butyl ether	6.08	0.50	3.0	ug/L	5.00		122	70-130	6.10	30	
Ethyl tert-butyl ether	5.11	0.40	0.50	ug/L	5.00		102	70-130	6.26	30	
Tert-amyl methyl ether	6.38	0.30	0.50	ug/L	5.00		128	70-130	7.31	30	
Surrogate: Bromofluorobenzene	30.8			ug/L	25.0		123	70-130			
Surrogate: Dibromofluoromethane	28.4			ug/L	25.0		113	70-130			
Surrogate: Toluene-d8	29.5			ug/L	25.0		118	70-130			

Matrix Spike (AA14664-MS1)

Source: 21A2013-02

Prepared: 01/26/21 Analyzed: 01/28/21

Acetone	18.5	2.0	5.0	ug/L	20.0	ND	92.6	70-130			
Acrylonitrile	4.29	0.40	5.0	ug/L	5.00	ND	85.8	70-130			J
Benzene	5.45	0.10	0.30	ug/L	5.00	ND	109	70-130			
Bromobenzene	5.52	0.20	0.50	ug/L	5.00	ND	110	70-130			
Bromochloromethane	5.04	0.40	0.50	ug/L	5.00	ND	101	70-130			
Bromodichloromethane	6.72	0.20	0.50	ug/L	5.00	ND	134	70-130			QM-05
Bromoform	4.20	0.30	0.50	ug/L	5.00	ND	84.0	70-130			
Bromomethane	6.14	0.40	0.50	ug/L	5.00	ND	123	70-130			
n-Butylbenzene	6.29	0.50	0.50	ug/L	5.00	ND	126	70-130			
sec-Butylbenzene	6.12	0.20	0.50	ug/L	5.00	ND	122	70-130			
tert-Butylbenzene	6.01	0.50	0.50	ug/L	5.00	ND	120	70-130			
Carbon disulfide	3.93	0.40	0.50	ug/L	5.00	ND	78.6	70-130			
Carbon tetrachloride	5.72	0.30	0.50	ug/L	5.00	ND	114	70-130			
Chlorobenzene	5.61	0.20	0.50	ug/L	5.00	ND	112	70-130			
Chloroethane	5.45	0.30	0.50	ug/L	5.00	ND	109	70-130			
Chloroform	6.48	0.30	0.50	ug/L	5.00	ND	130	70-130			
Chloromethane	6.50	0.40	0.50	ug/L	5.00	ND	130	70-130			
2-Chlorotoluene	5.80	0.20	0.50	ug/L	5.00	ND	116	70-130			
4-Chlorotoluene	5.64	0.20	0.50	ug/L	5.00	ND	113	70-130			
Dibromochloromethane	4.85	0.30	0.50	ug/L	5.00	ND	97.0	70-130			
1,2-Dibromo-3-chloropropane	4.82	0.50	0.50	ug/L	5.00	ND	96.4	70-130			
1,2-Dibromoethane (EDB)	5.00	0.50	0.50	ug/L	5.00	ND	100	70-130			

The results in this report apply to the samples analyzed in accordance with the chain of custody document. This analytical report must be reproduced in its entirety.



Alpha Analytical Laboratories, Inc. email: clientservices@alpha-labs.com
 Corporate: 208 Mason Street | Ukiah, CA 95482 | T: 707-468-0401 | F: 707-468-5267 | ELAP# 1551

Sample Traps, LLC 262 Rickenbacker Circle Livermore CA, 94551	Project Manager: Quality Control Manager Project: QC- 40ml Clear VOA- HCl Project Number: Silicone Batch #2020093003	Reported: 02/03/21 09:42
---------------------------------------------------------------------	----------------------------------------------------------------------------------------------------------------------------	-----------------------------

Volatile Organic Compounds by EPA Method 524.2 - Quality Control

Analyte	Result	MDL	Reporting Limit	Units	Spike Level	Source Result	%REC	%REC Limits	RPD	RPD Limit	Notes
---------	--------	-----	-----------------	-------	-------------	---------------	------	-------------	-----	-----------	-------

Batch AA14664 - VOAs in Water GCMS

Matrix Spike (AA14664-MS1)	Source: 21A2013-02			Prepared: 01/26/21		Analyzed: 01/28/21					
Dibromomethane	4.85	0.20	0.50	ug/L	5.00	ND	97.0	70-130			
1,2-Dichlorobenzene	5.33	0.20	0.50	ug/L	5.00	ND	107	70-130			
1,3-Dichlorobenzene	5.60	0.20	0.50	ug/L	5.00	ND	112	70-130			
1,4-Dichlorobenzene	5.23	0.20	0.50	ug/L	5.00	ND	105	70-130			
trans-1,4-Dichloro-2-butene	3.74	0.90	5.0	ug/L	5.00	ND	74.8	70-130			J
Dichlorodifluoromethane	6.50	0.50	0.50	ug/L	5.00	ND	130	70-130			
1,1-Dichloroethane	5.45	0.20	0.50	ug/L	5.00	ND	109	70-130			
1,2-Dichloroethane	4.78	0.10	0.50	ug/L	5.00	ND	95.6	70-130			
1,1-Dichloroethene	5.76	0.30	0.30	ug/L	5.00	ND	115	70-130			
cis-1,2-Dichloroethene	5.04	0.10	0.50	ug/L	5.00	ND	101	70-130			
trans-1,2-Dichloroethene	5.25	0.10	0.50	ug/L	5.00	ND	105	70-130			
1,2-Dichloropropane	5.14	0.20	0.50	ug/L	5.00	ND	103	70-130			
1,3-Dichloropropane	5.38	0.10	0.50	ug/L	5.00	ND	108	70-130			
2,2-Dichloropropane	5.17	0.30	0.50	ug/L	5.00	ND	103	70-130			
1,1-Dichloropropene	6.10	0.20	0.50	ug/L	5.00	ND	122	70-130			
cis-1,3-Dichloropropene	4.60	0.30	0.50	ug/L	5.00	ND	92.0	70-130			
trans-1,3-Dichloropropene	4.82	0.30	0.50	ug/L	5.00	ND	96.4	70-130			
Ethylbenzene	5.64	0.20	0.50	ug/L	5.00	ND	113	70-130			
2-Hexanone	4.33	0.50	5.0	ug/L	5.00	ND	86.6	70-130			J
Hexachlorobutadiene	5.49	0.40	0.50	ug/L	5.00	ND	110	70-130			
Isopropylbenzene	6.22	0.20	0.50	ug/L	5.00	ND	124	70-130			
p-Isopropyltoluene	5.99	0.50	0.50	ug/L	5.00	ND	120	70-130			
Methyl ethyl ketone	8.36	0.20	1.0	ug/L	10.0	ND	83.6	70-130			
Methyl iodide	6.39	0.40	2.0	ug/L	5.00	ND	128	70-130			
Methyl isobutyl ketone	9.77	0.90	1.0	ug/L	10.0	ND	97.7	70-130			
Methylene chloride	4.88	0.40	0.50	ug/L	5.00	ND	97.6	70-130			
Naphthalene	5.45	0.50	0.50	ug/L	5.00	ND	109	70-130			
n-Propylbenzene	5.89	0.50	0.50	ug/L	5.00	ND	118	70-130			
Styrene	ND	0.20	0.50	ug/L	5.00	ND		70-130			QM-05, U
1,1,1,2-Tetrachloroethane	4.36	0.40	0.50	ug/L	5.00	ND	87.2	70-130			
1,1,2,2-Tetrachloroethane	4.99	0.20	0.50	ug/L	5.00	ND	99.8	70-130			
Tetrachloroethene	10.8	0.20	0.50	ug/L	5.00	ND	216	70-130			QM-05
Toluene	5.88	0.30	0.50	ug/L	5.00	ND	118	70-130			
1,2,3-Trichlorobenzene	5.22	0.40	0.50	ug/L	5.00	ND	104	70-130			
1,2,4-Trichlorobenzene	5.16	0.40	0.50	ug/L	5.00	ND	103	70-130			
1,1,1-Trichloroethane	5.33	0.40	0.50	ug/L	5.00	ND	107	70-130			

The results in this report apply to the samples analyzed in accordance with the chain of custody document. This analytical report must be reproduced in its entirety.



Alpha Analytical Laboratories, Inc. email: clientservices@alpha-labs.com
 Corporate: 208 Mason Street | Ukiah, CA 95482 | T: 707-468-0401 | F: 707-468-5267 | ELAP# 1551

Sample Traps, LLC 262 Rickenbacker Circle Livermore CA, 94551	Project Manager: Quality Control Manager Project: QC- 40ml Clear VOA- HCl Project Number: Silicone Batch #2020093003	Reported: 02/03/21 09:42
---------------------------------------------------------------------	----------------------------------------------------------------------------------------------------------------------------	-----------------------------

Volatile Organic Compounds by EPA Method 524.2 - Quality Control

Analyte	Result	MDL	Reporting Limit	Units	Spike Level	Source Result	%REC	%REC Limits	RPD	RPD Limit	Notes
---------	--------	-----	-----------------	-------	-------------	---------------	------	-------------	-----	-----------	-------

Batch AA14664 - VOAs in Water GCMS

Matrix Spike (AA14664-MS1)	Source: 21A2013-02			Prepared: 01/26/21		Analyzed: 01/28/21					
1,1,2-Trichloroethane	5.05	0.20	0.50	ug/L	5.00	ND	101	70-130			
Trichloroethene	16.4	0.30	0.50	ug/L	5.00	ND	329	70-130			QM-05
Trichlorofluoromethane	6.65	0.50	0.50	ug/L	5.00	ND	133	70-130			QM-05
Trichlorotrifluoroethane	6.48	0.40	0.50	ug/L	5.00	ND	130	70-130			
1,2,3-Trichloropropane	5.21	0.50	0.50	ug/L	5.00	ND	104	70-130			
1,2,4-Trimethylbenzene	5.98	0.50	0.50	ug/L	5.00	ND	120	70-130			
1,3,5-Trimethylbenzene	5.64	0.50	0.50	ug/L	5.00	ND	113	70-130			
Vinyl chloride	6.49	0.50	0.50	ug/L	5.00	ND	130	70-130			
m,p-Xylene	11.8	0.20	0.50	ug/L	10.0	ND	118	70-130			
o-Xylene	5.44	0.20	0.50	ug/L	5.00	ND	109	70-130			
Xylenes (total)	17.3	0.20	0.50	ug/L	15.0	ND	115	70-130			
Methyl tert-butyl ether	5.09	0.50	3.0	ug/L	5.00	ND	102	70-130			
Ethyl tert-butyl ether	5.04	0.40	0.50	ug/L	5.00	ND	101	70-130			
Tert-amyl methyl ether	5.43	0.30	0.50	ug/L	5.00	ND	109	70-130			
Surrogate: Bromofluorobenzene	29.3			ug/L	25.0		117	70-130			
Surrogate: Dibromofluoromethane	26.3			ug/L	25.0		105	70-130			
Surrogate: Toluene-d8	28.5			ug/L	25.0		114	70-130			

Matrix Spike Dup (AA14664-MSD1)	Source: 21A2013-02			Prepared: 01/26/21		Analyzed: 01/28/21					
Acetone	23.8	2.0	5.0	ug/L	20.0	ND	119	70-130	25.2	30	
Acrylonitrile	5.37	0.40	5.0	ug/L	5.00	ND	107	70-130	22.4	30	
Benzene	5.55	0.10	0.30	ug/L	5.00	ND	111	70-130	1.82	30	
Bromobenzene	5.43	0.20	0.50	ug/L	5.00	ND	109	70-130	1.64	30	
Bromochloromethane	5.35	0.40	0.50	ug/L	5.00	ND	107	70-130	5.97	30	
Bromodichloromethane	6.97	0.20	0.50	ug/L	5.00	ND	139	70-130	3.65	30	QM-05
Bromoform	4.60	0.30	0.50	ug/L	5.00	ND	92.0	70-130	9.09	30	
Bromomethane	6.13	0.40	0.50	ug/L	5.00	ND	123	70-130	0.163	30	
n-Butylbenzene	6.10	0.50	0.50	ug/L	5.00	ND	122	70-130	3.07	30	
sec-Butylbenzene	5.87	0.20	0.50	ug/L	5.00	ND	117	70-130	4.17	30	
tert-Butylbenzene	5.80	0.50	0.50	ug/L	5.00	ND	116	70-130	3.56	30	
Carbon disulfide	4.34	0.40	0.50	ug/L	5.00	ND	86.8	70-130	9.92	30	
Carbon tetrachloride	5.89	0.30	0.50	ug/L	5.00	ND	118	70-130	2.93	30	
Chlorobenzene	5.39	0.20	0.50	ug/L	5.00	ND	108	70-130	4.00	30	
Chloroethane	5.79	0.30	0.50	ug/L	5.00	ND	116	70-130	6.05	30	
Chloroform	6.50	0.30	0.50	ug/L	5.00	ND	130	70-130	0.308	30	
Chloromethane	6.46	0.40	0.50	ug/L	5.00	ND	129	70-130	0.617	30	
2-Chlorotoluene	5.68	0.20	0.50	ug/L	5.00	ND	114	70-130	2.09	30	

The results in this report apply to the samples analyzed in accordance with the chain of custody document. This analytical report must be reproduced in its entirety.



Alpha Analytical Laboratories, Inc. email: clientservices@alpha-labs.com
 Corporate: 208 Mason Street | Ukiah, CA 95482 | T: 707-468-0401 | F: 707-468-5267 | ELAP# 1551

Sample Traps, LLC 262 Rickenbacker Circle Livermore CA, 94551	Project Manager: Quality Control Manager Project: QC- 40ml Clear VOA- HCl Project Number: Silicone Batch #2020093003	Reported: 02/03/21 09:42
---------------------------------------------------------------------	----------------------------------------------------------------------------------------------------------------------------	-----------------------------

Volatile Organic Compounds by EPA Method 524.2 - Quality Control

Analyte	Result	MDL	Reporting Limit	Units	Spike Level	Source Result	%REC	%REC Limits	RPD	RPD Limit	Notes
---------	--------	-----	-----------------	-------	-------------	---------------	------	-------------	-----	-----------	-------

Batch AA14664 - VOAs in Water GCMS

Matrix Spike Dup (AA14664-MSD1)	Source: 21A2013-02			Prepared: 01/26/21		Analyzed: 01/28/21					
4-Chlorotoluene	5.47	0.20	0.50	ug/L	5.00	ND	109	70-130	3.06	30	
Dibromochloromethane	5.27	0.30	0.50	ug/L	5.00	ND	105	70-130	8.30	30	
1,2-Dibromo-3-chloropropane	5.14	0.50	0.50	ug/L	5.00	ND	103	70-130	6.43	25	
1,2-Dibromoethane (EDB)	5.09	0.50	0.50	ug/L	5.00	ND	102	70-130	1.78	25	
Dibromomethane	5.23	0.20	0.50	ug/L	5.00	ND	105	70-130	7.54	30	
1,2-Dichlorobenzene	5.45	0.20	0.50	ug/L	5.00	ND	109	70-130	2.23	30	
1,3-Dichlorobenzene	5.41	0.20	0.50	ug/L	5.00	ND	108	70-130	3.45	30	
1,4-Dichlorobenzene	5.20	0.20	0.50	ug/L	5.00	ND	104	70-130	0.575	30	
trans-1,4-Dichloro-2-butene	4.17	0.90	5.0	ug/L	5.00	ND	83.4	70-130	10.9	25	J
Dichlorodifluoromethane	6.31	0.50	0.50	ug/L	5.00	ND	126	70-130	2.97	30	
1,1-Dichloroethane	5.65	0.20	0.50	ug/L	5.00	ND	113	70-130	3.60	30	
1,2-Dichloroethane	5.49	0.10	0.50	ug/L	5.00	ND	110	70-130	13.8	30	
1,1-Dichloroethene	5.80	0.30	0.30	ug/L	5.00	ND	116	70-130	0.692	30	
cis-1,2-Dichloroethene	5.42	0.10	0.50	ug/L	5.00	ND	108	70-130	7.27	30	
trans-1,2-Dichloroethene	5.58	0.10	0.50	ug/L	5.00	ND	112	70-130	6.09	30	
1,2-Dichloropropane	5.17	0.20	0.50	ug/L	5.00	ND	103	70-130	0.582	30	
1,3-Dichloropropane	5.28	0.10	0.50	ug/L	5.00	ND	106	70-130	1.88	30	
2,2-Dichloropropane	3.52	0.30	0.50	ug/L	5.00	ND	70.4	70-130	38.0	30	QM-05
1,1-Dichloropropene	6.04	0.20	0.50	ug/L	5.00	ND	121	70-130	0.988	30	
cis-1,3-Dichloropropene	4.52	0.30	0.50	ug/L	5.00	ND	90.4	70-130	1.75	30	
trans-1,3-Dichloropropene	4.69	0.30	0.50	ug/L	5.00	ND	93.8	70-130	2.73	30	
2-Hexanone	4.79	0.50	5.0	ug/L	5.00	ND	95.8	70-130	10.1	25	J
Ethylbenzene	5.42	0.20	0.50	ug/L	5.00	ND	108	70-130	3.98	30	
Hexachlorobutadiene	5.48	0.40	0.50	ug/L	5.00	ND	110	70-130	0.182	30	
Isopropylbenzene	6.02	0.20	0.50	ug/L	5.00	ND	120	70-130	3.27	30	
p-Isopropyltoluene	5.81	0.50	0.50	ug/L	5.00	ND	116	70-130	3.05	30	
Methyl ethyl ketone	9.51	0.20	1.0	ug/L	10.0	ND	95.1	70-130	12.9	30	
Methyl iodide	6.49	0.40	2.0	ug/L	5.00	ND	130	70-130	1.55	25	
Methyl isobutyl ketone	10.6	0.90	1.0	ug/L	10.0	ND	106	70-130	8.53	30	
Methylene chloride	5.19	0.40	0.50	ug/L	5.00	ND	104	70-130	6.16	30	
Naphthalene	6.11	0.50	0.50	ug/L	5.00	ND	122	70-130	11.4	30	
n-Propylbenzene	5.79	0.50	0.50	ug/L	5.00	ND	116	70-130	1.71	30	
Styrene	ND	0.20	0.50	ug/L	5.00	ND		70-130		30	QM-05, U
1,1,1,2-Tetrachloroethane	4.48	0.40	0.50	ug/L	5.00	ND	89.6	70-130	2.71	30	
1,1,2,2-Tetrachloroethane	5.13	0.20	0.50	ug/L	5.00	ND	103	70-130	2.77	30	
Tetrachloroethene	10.4	0.20	0.50	ug/L	5.00	ND	209	70-130	3.39	30	QM-05

The results in this report apply to the samples analyzed in accordance with the chain of custody document. This analytical report must be reproduced in its entirety.



Alpha Analytical Laboratories, Inc. email: clientservices@alpha-labs.com
 Corporate: 208 Mason Street | Ukiah, CA 95482 | T: 707-468-0401 | F: 707-468-5267 | ELAP# 1551

Sample Traps, LLC 262 Rickenbacker Circle Livermore CA, 94551	Project Manager: Quality Control Manager Project: QC- 40ml Clear VOA- HCl Project Number: Silicone Batch #2020093003	Reported: 02/03/21 09:42
---------------------------------------------------------------------	----------------------------------------------------------------------------------------------------------------------------	-----------------------------

Volatile Organic Compounds by EPA Method 524.2 - Quality Control

Analyte	Result	MDL	Reporting Limit	Units	Spike Level	Source Result	%REC	%REC Limits	RPD	RPD Limit	Notes
---------	--------	-----	-----------------	-------	-------------	---------------	------	-------------	-----	-----------	-------

Batch AA14664 - VOAs in Water GCMS

Matrix Spike Dup (AA14664-MSD1)	Source: 21A2013-02			Prepared: 01/26/21		Analyzed: 01/28/21					
Toluene	5.76	0.30	0.50	ug/L	5.00	ND	115	70-130	2.06	30	
1,2,3-Trichlorobenzene	5.61	0.40	0.50	ug/L	5.00	ND	112	70-130	7.20	30	
1,2,4-Trichlorobenzene	5.37	0.40	0.50	ug/L	5.00	ND	107	70-130	3.99	30	
1,1,1-Trichloroethane	5.81	0.40	0.50	ug/L	5.00	ND	116	70-130	8.62	30	
1,1,2-Trichloroethane	5.05	0.20	0.50	ug/L	5.00	ND	101	70-130	0.00	30	
Trichloroethene	16.7	0.30	0.50	ug/L	5.00	ND	333	70-130	1.33	30	QM-05
Trichlorofluoromethane	6.49	0.50	0.50	ug/L	5.00	ND	130	70-130	2.44	30	
Trichlorotrifluoroethane	6.45	0.40	0.50	ug/L	5.00	ND	129	70-130	0.464	30	
1,2,3-Trichloropropane	5.38	0.50	0.50	ug/L	5.00	ND	108	70-130	3.21	25	
1,2,4-Trimethylbenzene	5.73	0.50	0.50	ug/L	5.00	ND	115	70-130	4.27	30	
1,3,5-Trimethylbenzene	4.97	0.50	0.50	ug/L	5.00	ND	99.4	70-130	12.6	30	
Vinyl chloride	6.25	0.50	0.50	ug/L	5.00	ND	125	70-130	3.77	30	
m,p-Xylene	11.2	0.20	0.50	ug/L	10.0	ND	112	70-130	5.12	30	
o-Xylene	5.34	0.20	0.50	ug/L	5.00	ND	107	70-130	1.86	30	
Xylenes (total)	16.6	0.20	0.50	ug/L	15.0	ND	110	70-130	4.08	30	
Methyl tert-butyl ether	5.59	0.50	3.0	ug/L	5.00	ND	112	70-130	9.36	30	
Ethyl tert-butyl ether	4.77	0.40	0.50	ug/L	5.00	ND	95.4	70-130	5.50	30	
Tert-amyl methyl ether	5.93	0.30	0.50	ug/L	5.00	ND	119	70-130	8.80	30	
Surrogate: Bromofluorobenzene	27.8			ug/L	25.0		111	70-130			
Surrogate: Dibromofluoromethane	26.5			ug/L	25.0		106	70-130			
Surrogate: Toluene-d8	27.2			ug/L	25.0		109	70-130			

The results in this report apply to the samples analyzed in accordance with the chain of custody document. This analytical report must be reproduced in its entirety.



Alpha Analytical Laboratories, Inc. email: clientservices@alpha-labs.com
 Corporate: 208 Mason Street | Ukiah, CA 95482 | T: 707-468-0401 | F: 707-468-5267 | ELAP# 1551

Sample Traps, LLC 262 Rickenbacker Circle Livermore CA, 94551	Project Manager: Quality Control Manager Project: QC- 40ml Clear VOA- HCl Project Number: Silicone Batch #2020093003	Reported: 02/03/21 09:42
---------------------------------------------------------------------	----------------------------------------------------------------------------------------------------------------------------	-----------------------------

Volatile Organic Compounds by EPA Method 8260B - Quality Control

Analyte	Result	MDL	Reporting Limit	Units	Spike Level	Source Result	%REC	%REC Limits	RPD	RPD Limit	Notes
---------	--------	-----	-----------------	-------	-------------	---------------	------	-------------	-----	-----------	-------

Batch AA14728 - VOAs in Water GCMS

Blank (AA14728-BLK1)

Prepared & Analyzed: 01/27/21

Acetone	ND	3.0	5.0	ug/L							U
Acetonitrile	ND	50	100	ug/L							U
Allyl chloride	ND	0.40	10	ug/L							U
Acrylonitrile	ND	0.40	5.0	ug/L							U
Benzene	ND	0.30	0.30	ug/L							U
Bromobenzene	ND	0.40	0.50	ug/L							U
Bromochloromethane	ND	0.40	0.50	ug/L							U
Bromodichloromethane	ND	0.40	0.50	ug/L							U
Bromoform	ND	0.30	0.50	ug/L							U
Bromomethane	ND	0.40	0.50	ug/L							U
n-Butylbenzene	ND	0.40	0.50	ug/L							U
sec-Butylbenzene	ND	0.40	0.50	ug/L							U
tert-Butylbenzene	ND	0.30	0.50	ug/L							U
Carbon disulfide	ND	0.40	5.0	ug/L							U
Carbon tetrachloride	ND	0.40	0.50	ug/L							U
Chlorobenzene	ND	0.30	0.50	ug/L							U
Chloroethane	ND	0.40	0.50	ug/L							U
2-Chloroethylvinyl ether	ND	0.70	1.0	ug/L							U
Chloroform	ND	0.40	0.50	ug/L							U
Chloromethane	ND	0.40	0.50	ug/L							U
Chloroprene	ND	0.40	1.0	ug/L							U
2-Chlorotoluene	ND	0.40	0.50	ug/L							U
4-Chlorotoluene	ND	0.30	0.50	ug/L							U
Dibromochloromethane	ND	0.40	0.50	ug/L							U
1,2-Dibromo-3-chloropropane	ND	0.60	2.0	ug/L							U
1,2-Dibromoethane (EDB)	ND	0.40	0.50	ug/L							U
Dibromomethane	ND	0.40	0.50	ug/L							U
1,2-Dichlorobenzene	ND	0.40	0.50	ug/L							U
1,3-Dichlorobenzene	ND	0.40	0.50	ug/L							U
1,4-Dichlorobenzene	ND	0.10	0.50	ug/L							U
trans-1,4-Dichloro-2-butene	ND	0.50	5.0	ug/L							U
Dichlorodifluoromethane	ND	0.40	0.50	ug/L							U
1,1-Dichloroethane	ND	0.30	0.50	ug/L							U
1,2-Dichloroethane	ND	0.40	0.50	ug/L							U
1,1-Dichloroethene	ND	0.30	0.50	ug/L							U
cis-1,2-Dichloroethene	ND	0.40	0.50	ug/L							U

The results in this report apply to the samples analyzed in accordance with the chain of custody document. This analytical report must be reproduced in its entirety.



Alpha Analytical Laboratories, Inc. email: clientservices@alpha-labs.com
 Corporate: 208 Mason Street | Ukiah, CA 95482 | T: 707-468-0401 | F: 707-468-5267 | ELAP# 1551

Sample Traps, LLC 262 Rickenbacker Circle Livermore CA, 94551	Project Manager: Quality Control Manager Project: QC- 40ml Clear VOA- HCl Project Number: Silicone Batch #2020093003	Reported: 02/03/21 09:42
---------------------------------------------------------------------	----------------------------------------------------------------------------------------------------------------------------	-----------------------------

Volatile Organic Compounds by EPA Method 8260B - Quality Control

Analyte	Result	MDL	Reporting Limit	Units	Spike Level	Source Result	%REC	%REC Limits	RPD	RPD Limit	Notes
---------	--------	-----	-----------------	-------	-------------	---------------	------	-------------	-----	-----------	-------

Batch AA14728 - VOAs in Water GCMS

Blank (AA14728-BLK1)

Prepared & Analyzed: 01/27/21

trans-1,2-Dichloroethene	ND	0.40	0.50	ug/L							U
1,2-Dichloropropane	ND	0.40	0.50	ug/L							U
1,3-Dichloropropane	ND	0.40	0.50	ug/L							U
2,2-Dichloropropane	ND	0.50	0.50	ug/L							U
1,1-Dichloropropene	ND	0.40	0.50	ug/L							U
cis-1,3-Dichloropropene	ND	0.40	0.50	ug/L							U
trans-1,3-Dichloropropene	ND	0.40	0.50	ug/L							U
Diethyl ether	ND	0.20	1.0	ug/L							U
Di-isopropyl ether	ND	0.40	0.50	ug/L							U
Ethyl methacrylate	ND	0.70	10	ug/L							U
Ethanol	ND	20	50	ug/L							U
Ethylbenzene	ND	0.40	0.50	ug/L							U
Ethyl tert-butyl ether	ND	0.40	0.50	ug/L							U
Hexachloroethane	ND	0.40	1.0	ug/L							U
Hexachlorobutadiene	ND	0.50	0.50	ug/L							U
2-Hexanone	ND	0.50	5.0	ug/L							U
Isobutanol	ND	40	100	ug/L							U
Isopropylbenzene	ND	0.40	0.50	ug/L							U
p-Isopropyltoluene	ND	0.40	0.50	ug/L							U
Methylene chloride	ND	0.50	0.50	ug/L							U
Methacrylonitrile	ND	0.40	1.0	ug/L							U
Methyl ethyl ketone	ND	0.70	1.0	ug/L							U
Methyl iodide	ND	0.40	2.0	ug/L							U
Methyl isobutyl ketone	ND	0.60	1.0	ug/L							U
Methyl methacrylate	ND	0.40	1.0	ug/L							U
Propionitrile	ND	20	50	ug/L							U
Methyl tert-butyl ether	ND	0.50	0.50	ug/L							U
Naphthalene	ND	0.50	0.50	ug/L							U
n-Propylbenzene	ND	0.40	0.50	ug/L							U
Styrene	ND	0.40	0.50	ug/L							U
Tert-amyl methyl ether	ND	0.40	0.50	ug/L							U
Tert-butyl alcohol	ND	6.0	10	ug/L							U
1,1,1,2-Tetrachloroethane	ND	0.40	0.50	ug/L							U
1,1,2,2-Tetrachloroethane	ND	0.30	0.50	ug/L							U
Tetrachloroethene	ND	0.40	0.50	ug/L							U
Tetrahydrofuran	ND	0.40	5.0	ug/L							U

The results in this report apply to the samples analyzed in accordance with the chain of custody document. This analytical report must be reproduced in its entirety.



Alpha Analytical Laboratories, Inc. email: clientservices@alpha-labs.com
 Corporate: 208 Mason Street | Ukiah, CA 95482 | T: 707-468-0401 | F: 707-468-5267 | ELAP# 1551

Sample Traps, LLC 262 Rickenbacker Circle Livermore CA, 94551	Project Manager: Quality Control Manager Project: QC- 40ml Clear VOA- HCl Project Number: Silicone Batch #2020093003	Reported: 02/03/21 09:42
---------------------------------------------------------------------	----------------------------------------------------------------------------------------------------------------------------	-----------------------------

Volatile Organic Compounds by EPA Method 8260B - Quality Control

Analyte	Result	MDL	Reporting Limit	Units	Spike Level	Source Result	%REC	%REC Limits	RPD	RPD Limit	Notes
---------	--------	-----	-----------------	-------	-------------	---------------	------	-------------	-----	-----------	-------

Batch AA14728 - VOAs in Water GCMS

Blank (AA14728-BLK1)

Prepared & Analyzed: 01/27/21

Toluene	ND	0.30	0.30	ug/L							U
1,2,4-Trichlorobenzene	ND	0.50	0.50	ug/L							U
1,2,3-Trichlorobenzene	ND	0.50	0.50	ug/L							U
1,1,1-Trichloroethane	ND	0.40	0.50	ug/L							U
1,1,2-Trichloroethane	ND	0.40	0.50	ug/L							U
Trichloroethene	ND	0.40	0.50	ug/L							U
Trichlorofluoromethane	ND	0.20	0.50	ug/L							U
1,2,3-Trichloropropane	ND	0.40	0.50	ug/L							U
Trichlorotrifluoroethane	ND	0.20	0.50	ug/L							U
1,2,4-Trimethylbenzene	ND	0.40	0.50	ug/L							U
1,3,5-Trimethylbenzene	ND	0.30	0.50	ug/L							U
Vinyl acetate	ND	0.80	1.0	ug/L							U
Vinyl chloride	ND	0.40	0.50	ug/L							U
m,p-Xylene	ND	0.50	0.50	ug/L							U
o-Xylene	ND	0.40	0.50	ug/L							U
Xylenes (total)	ND	0.50	0.50	ug/L							U
Surrogate: Bromofluorobenzene	27.4			ug/L	25.0		110	70-130			
Surrogate: Dibromofluoromethane	25.9			ug/L	25.0		104	70-130			
Surrogate: Toluene-d8	27.4			ug/L	25.0		110	70-130			

LCS (AA14728-BS1)

Prepared & Analyzed: 01/27/21

Acetone	71.6	3.0	5.0	ug/L	80.0		89.5	48-124			
Acetonitrile	1980	50	100	ug/L	2000		99.2	70-130			
Allyl chloride	19.2	0.40	10	ug/L	20.0		95.8	70-130			
Acrylonitrile	19.0	0.40	5.0	ug/L	20.0		95.2	70-130			
Benzene	18.2	0.30	0.30	ug/L	20.0		90.8	82-122			
Bromobenzene	19.6	0.40	0.50	ug/L	20.0		98.0	83-122			
Bromochloromethane	21.2	0.40	0.50	ug/L	20.0		106	83-124			
Bromodichloromethane	20.2	0.40	0.50	ug/L	20.0		101	86-135			
Bromoform	16.7	0.30	0.50	ug/L	20.0		83.5	76-144			
Bromomethane	17.9	0.40	0.50	ug/L	20.0		89.5	69-145			
n-Butylbenzene	18.7	0.40	0.50	ug/L	20.0		93.4	79-132			
sec-Butylbenzene	20.8	0.40	0.50	ug/L	20.0		104	86-132			
tert-Butylbenzene	22.0	0.30	0.50	ug/L	20.0		110	82-126			
Carbon disulfide	21.2	0.40	5.0	ug/L	20.0		106	70-130			
Carbon tetrachloride	19.2	0.40	0.50	ug/L	20.0		95.9	77-134			
Chlorobenzene	18.6	0.30	0.50	ug/L	20.0		92.8	84-119			

The results in this report apply to the samples analyzed in accordance with the chain of custody document. This analytical report must be reproduced in its entirety.



Alpha Analytical Laboratories, Inc. email: clientservices@alpha-labs.com
 Corporate: 208 Mason Street | Ukiah, CA 95482 | T: 707-468-0401 | F: 707-468-5267 | ELAP# 1551

Sample Traps, LLC 262 Rickenbacker Circle Livermore CA, 94551	Project Manager: Quality Control Manager Project: QC- 40ml Clear VOA- HCl Project Number: Silicone Batch #2020093003	Reported: 02/03/21 09:42
---------------------------------------------------------------------	----------------------------------------------------------------------------------------------------------------------------	-----------------------------

Volatile Organic Compounds by EPA Method 8260B - Quality Control

Analyte	Result	MDL	Reporting Limit	Units	Spike Level	Source Result	%REC	%REC Limits	RPD	RPD Limit	Notes
---------	--------	-----	-----------------	-------	-------------	---------------	------	-------------	-----	-----------	-------

Batch AA14728 - VOAs in Water GCMS

LCS (AA14728-BS1)

Prepared & Analyzed: 01/27/21

Chloroethane	20.3	0.40	0.50	ug/L	20.0		102	68-133			
2-Chloroethylvinyl ether	32.9	0.70	1.0	ug/L	40.0		82.2	75-130			
Chloroform	20.1	0.40	0.50	ug/L	20.0		100	81-122			
Chloromethane	21.9	0.40	0.50	ug/L	20.0		110	63-129			
Chloroprene	20.9	0.40	1.0	ug/L	20.0		104	70-130			
2-Chlorotoluene	20.2	0.40	0.50	ug/L	20.0		101	79-132			
4-Chlorotoluene	19.6	0.30	0.50	ug/L	20.0		98.2	80-122			
Dibromochloromethane	19.8	0.40	0.50	ug/L	20.0		99.2	83-135			
1,2-Dibromo-3-chloropropane	14.7	0.60	2.0	ug/L	20.0		73.3	73-128			
1,2-Dibromoethane (EDB)	19.7	0.40	0.50	ug/L	20.0		98.4	80-120			
Dibromomethane	20.2	0.40	0.50	ug/L	20.0		101	82-124			
1,2-Dichlorobenzene	18.9	0.40	0.50	ug/L	20.0		94.5	84-121			
1,3-Dichlorobenzene	19.6	0.40	0.50	ug/L	20.0		97.9	80-120			
1,4-Dichlorobenzene	18.2	0.10	0.50	ug/L	20.0		91.0	84-120			
trans-1,4-Dichloro-2-butene	16.7	0.50	5.0	ug/L	20.0		83.6	70-130			
Dichlorodifluoromethane	20.1	0.40	0.50	ug/L	20.0		100	52-142			
1,1-Dichloroethane	19.4	0.30	0.50	ug/L	20.0		97.2	81-126			
1,2-Dichloroethane	18.2	0.40	0.50	ug/L	20.0		91.1	77-117			
1,1-Dichloroethene	18.7	0.30	0.50	ug/L	20.0		93.6	71-151			
cis-1,2-Dichloroethene	19.0	0.40	0.50	ug/L	20.0		95.2	84-131			
trans-1,2-Dichloroethene	20.8	0.40	0.50	ug/L	20.0		104	79-128			
1,2-Dichloropropane	18.9	0.40	0.50	ug/L	20.0		94.6	82-125			
1,3-Dichloropropane	17.8	0.40	0.50	ug/L	20.0		88.8	83-120			
2,2-Dichloropropane	17.0	0.50	0.50	ug/L	20.0		85.0	80-125			
1,1-Dichloropropene	20.2	0.40	0.50	ug/L	20.0		101	85-130			
cis-1,3-Dichloropropene	20.5	0.40	0.50	ug/L	20.0		103	83-128			
trans-1,3-Dichloropropene	16.0	0.40	0.50	ug/L	20.0		80.1	67-129			
Diethyl ether	23.4	0.20	1.0	ug/L	20.0		117	70-130			
Di-isopropyl ether	22.9	0.40	0.50	ug/L	20.0		114	83-132			
Ethylbenzene	19.5	0.40	0.50	ug/L	20.0		97.7	84-124			
Ethanol	1000	20	50	ug/L	980		102	50-150			
Ethyl methacrylate	18.4	0.70	10	ug/L	20.0		92.0	70-130			
Hexachloroethane	16.1	0.40	1.0	ug/L	20.0		80.7	70-130			
Ethyl tert-butyl ether	19.7	0.40	0.50	ug/L	20.0		98.6	74-127			
Hexachlorobutadiene	19.1	0.50	0.50	ug/L	20.0		95.6	75-135			
2-Hexanone	18.2	0.50	5.0	ug/L	20.0		91.0	70-130			

The results in this report apply to the samples analyzed in accordance with the chain of custody document. This analytical report must be reproduced in its entirety.



Alpha Analytical Laboratories, Inc. email: clientservices@alpha-labs.com
 Corporate: 208 Mason Street | Ukiah, CA 95482 | T: 707-468-0401 | F: 707-468-5267 | ELAP# 1551

Sample Traps, LLC 262 Rickenbacker Circle Livermore CA, 94551	Project Manager: Quality Control Manager Project: QC- 40ml Clear VOA- HCl Project Number: Silicone Batch #2020093003	Reported: 02/03/21 09:42
---------------------------------------------------------------------	----------------------------------------------------------------------------------------------------------------------------	-----------------------------

Volatile Organic Compounds by EPA Method 8260B - Quality Control

Analyte	Result	MDL	Reporting Limit	Units	Spike Level	Source Result	%REC	%REC Limits	RPD	RPD Limit	Notes
---------	--------	-----	-----------------	-------	-------------	---------------	------	-------------	-----	-----------	-------

Batch AA14728 - VOAs in Water GCMS

LCS (AA14728-BS1)

Prepared & Analyzed: 01/27/21

Isobutanol	1840	40	100	ug/L	2000		92.1	70-130			
Isopropylbenzene	21.1	0.40	0.50	ug/L	20.0		106	75-116			
p-Isopropyltoluene	21.1	0.40	0.50	ug/L	20.0		106	78-124			
Methylene chloride	18.3	0.50	0.50	ug/L	20.0		91.7	72-132			
Methacrylonitrile	21.0	0.40	1.0	ug/L	20.0		105	70-130			
Methyl ethyl ketone	36.0	0.70	1.0	ug/L	40.0		90.0	58-157			
Methyl iodide	22.6	0.40	2.0	ug/L	20.0		113	56-167			
Methyl isobutyl ketone	36.7	0.60	1.0	ug/L	40.0		91.8	70-130			
Methyl methacrylate	20.4	0.40	1.0	ug/L	20.0		102	70-130			
Naphthalene	17.7	0.50	0.50	ug/L	20.0		88.6	84-134			
Propionitrile	978	20	50	ug/L	1000		97.8	70-130			
Methyl tert-butyl ether	19.6	0.50	0.50	ug/L	20.0		98.0	84-119			
n-Propylbenzene	19.1	0.40	0.50	ug/L	20.0		95.4	75-127			
Styrene	20.2	0.40	0.50	ug/L	20.0		101	80-125			
Tert-amyl methyl ether	18.9	0.40	0.50	ug/L	20.0		94.6	74-120			
Tert-butyl alcohol	401	6.0	10	ug/L	400		100	66-147			
1,1,1,2-Tetrachloroethane	18.7	0.40	0.50	ug/L	20.0		93.4	80-132			
1,1,2,2-Tetrachloroethane	18.4	0.30	0.50	ug/L	20.0		92.0	84-115			
Tetrachloroethene	19.6	0.40	0.50	ug/L	20.0		97.8	56-156			
Tetrahydrofuran	20.3	0.40	5.0	ug/L	20.0		101	70-130			
Toluene	19.2	0.30	0.30	ug/L	20.0		96.1	76-137			
1,2,3-Trichlorobenzene	20.4	0.50	0.50	ug/L	20.0		102	85-133			
1,2,4-Trichlorobenzene	20.7	0.50	0.50	ug/L	20.0		103	84-126			
1,1,1-Trichloroethane	19.3	0.40	0.50	ug/L	20.0		96.6	70-130			
1,1,2-Trichloroethane	18.7	0.40	0.50	ug/L	20.0		93.4	83-122			
Trichloroethene	18.6	0.40	0.50	ug/L	20.0		93.2	84-123			
Trichlorofluoromethane	19.9	0.20	0.50	ug/L	20.0		99.5	74-130			
1,2,3-Trichloropropane	19.0	0.40	0.50	ug/L	20.0		95.2	78-122			
Trichlorotrifluoroethane	22.6	0.20	0.50	ug/L	20.0		113	82-125			
1,2,4-Trimethylbenzene	19.9	0.40	0.50	ug/L	20.0		99.4	85-127			
1,3,5-Trimethylbenzene	21.5	0.30	0.50	ug/L	20.0		108	80-125			
Vinyl acetate	46.3	0.80	1.0	ug/L	40.0		116	60-140			
Vinyl chloride	23.8	0.40	0.50	ug/L	20.0		119	70-130			
m,p-Xylene	39.5	0.50	0.50	ug/L	40.0		98.8	81-124			
o-Xylene	20.2	0.40	0.50	ug/L	20.0		101	80-126			
Xylenes (total)	59.7	0.50	0.50	ug/L	60.0		99.5	81-126			

The results in this report apply to the samples analyzed in accordance with the chain of custody document. This analytical report must be reproduced in its entirety.



Alpha Analytical Laboratories, Inc. email: clientservices@alpha-labs.com
 Corporate: 208 Mason Street | Ukiah, CA 95482 | T: 707-468-0401 | F: 707-468-5267 | ELAP# 1551

Sample Traps, LLC 262 Rickenbacker Circle Livermore CA, 94551	Project Manager: Quality Control Manager Project: QC- 40ml Clear VOA- HCl Project Number: Silicone Batch #2020093003	Reported: 02/03/21 09:42
---------------------------------------------------------------------	----------------------------------------------------------------------------------------------------------------------------	-----------------------------

Volatile Organic Compounds by EPA Method 8260B - Quality Control

Analyte	Result	MDL	Reporting Limit	Units	Spike Level	Source Result	%REC	%REC Limits	RPD	RPD Limit	Notes
---------	--------	-----	-----------------	-------	-------------	---------------	------	-------------	-----	-----------	-------

Batch AA14728 - VOAs in Water GCMS

LCS (AA14728-BS1)

Prepared & Analyzed: 01/27/21

Surrogate: Bromofluorobenzene	28.1			ug/L	25.0		112	70-130			
Surrogate: Dibromofluoromethane	26.8			ug/L	25.0		107	70-130			
Surrogate: Toluene-d8	25.6			ug/L	25.0		102	70-130			

LCS Dup (AA14728-BS1)

Prepared & Analyzed: 01/27/21

Acetone	69.3	3.0	5.0	ug/L	80.0		86.6	48-124	3.32	25	
Acetonitrile	1840	50	100	ug/L	2000		91.8	70-130	7.80	25	
Acrylonitrile	19.4	0.40	5.0	ug/L	20.0		97.2	70-130	2.08	25	
Allyl chloride	18.2	0.40	10	ug/L	20.0		91.2	70-130	5.03	25	
Benzene	17.8	0.30	0.30	ug/L	20.0		88.9	82-122	2.11	25	
Bromobenzene	19.1	0.40	0.50	ug/L	20.0		95.6	83-122	2.48	25	
Bromochloromethane	19.3	0.40	0.50	ug/L	20.0		96.6	83-124	9.13	25	
Bromodichloromethane	20.2	0.40	0.50	ug/L	20.0		101	86-135	0.0989	25	
Bromoform	17.3	0.30	0.50	ug/L	20.0		86.6	76-144	3.64	25	
Bromomethane	17.5	0.40	0.50	ug/L	20.0		87.3	69-145	2.49	25	
n-Butylbenzene	18.4	0.40	0.50	ug/L	20.0		91.9	79-132	1.67	25	
sec-Butylbenzene	19.4	0.40	0.50	ug/L	20.0		97.0	86-132	7.15	25	
tert-Butylbenzene	20.4	0.30	0.50	ug/L	20.0		102	82-126	7.27	25	
Carbon disulfide	19.9	0.40	5.0	ug/L	20.0		99.6	70-130	6.42	30	
Carbon tetrachloride	18.7	0.40	0.50	ug/L	20.0		93.7	77-134	2.32	25	
Chlorobenzene	18.4	0.30	0.50	ug/L	20.0		92.1	84-119	0.703	25	
Chloroethane	18.6	0.40	0.50	ug/L	20.0		92.8	68-133	9.16	25	
2-Chloroethylvinyl ether	37.1	0.70	1.0	ug/L	40.0		92.7	75-130	12.0	30	
Chloroform	19.2	0.40	0.50	ug/L	20.0		95.8	81-122	4.69	25	
Chloroprene	19.6	0.40	1.0	ug/L	20.0		98.1	70-130	6.17	25	
Chloromethane	20.3	0.40	0.50	ug/L	20.0		102	63-129	7.72	25	
2-Chlorotoluene	19.4	0.40	0.50	ug/L	20.0		97.0	79-132	3.99	25	
4-Chlorotoluene	19.0	0.30	0.50	ug/L	20.0		95.1	80-122	3.21	25	
Dibromochloromethane	19.8	0.40	0.50	ug/L	20.0		99.0	83-135	0.151	25	
1,2-Dibromo-3-chloropropane	14.9	0.60	2.0	ug/L	20.0		74.7	73-128	1.89	25	
1,2-Dibromoethane (EDB)	19.2	0.40	0.50	ug/L	20.0		95.8	80-120	2.63	25	
Dibromomethane	19.5	0.40	0.50	ug/L	20.0		97.7	82-124	3.32	25	
1,2-Dichlorobenzene	19.1	0.40	0.50	ug/L	20.0		95.7	84-121	1.26	25	
1,3-Dichlorobenzene	18.8	0.40	0.50	ug/L	20.0		94.0	80-120	4.01	25	
1,4-Dichlorobenzene	18.5	0.10	0.50	ug/L	20.0		92.4	84-120	1.64	25	
trans-1,4-Dichloro-2-butene	18.1	0.50	5.0	ug/L	20.0		90.4	70-130	7.88	25	
Dichlorodifluoromethane	19.6	0.40	0.50	ug/L	20.0		97.8	52-142	2.77	25	

The results in this report apply to the samples analyzed in accordance with the chain of custody document. This analytical report must be reproduced in its entirety.



Alpha Analytical Laboratories, Inc. email: clientservices@alpha-labs.com
 Corporate: 208 Mason Street | Ukiah, CA 95482 | T: 707-468-0401 | F: 707-468-5267 | ELAP# 1551

Sample Traps, LLC 262 Rickenbacker Circle Livermore CA, 94551	Project Manager: Quality Control Manager Project: QC- 40ml Clear VOA- HCl Project Number: Silicone Batch #2020093003	Reported: 02/03/21 09:42
---------------------------------------------------------------------	----------------------------------------------------------------------------------------------------------------------------	-----------------------------

Volatile Organic Compounds by EPA Method 8260B - Quality Control

Analyte	Result	MDL	Reporting Limit	Units	Spike Level	Source Result	%REC	%REC Limits	RPD	RPD Limit	Notes
---------	--------	-----	-----------------	-------	-------------	---------------	------	-------------	-----	-----------	-------

Batch AA14728 - VOAs in Water GCMS

LCS Dup (AA14728-BSD1)

Prepared & Analyzed: 01/27/21

1,1-Dichloroethane	17.8	0.30	0.50	ug/L	20.0		89.1	81-126	8.70	25	
1,2-Dichloroethane	17.4	0.40	0.50	ug/L	20.0		87.1	77-117	4.49	25	
1,1-Dichloroethene	17.7	0.30	0.50	ug/L	20.0		88.6	71-151	5.60	25	
cis-1,2-Dichloroethene	17.4	0.40	0.50	ug/L	20.0		87.2	84-131	8.78	25	
trans-1,2-Dichloroethene	18.2	0.40	0.50	ug/L	20.0		91.1	79-128	13.4	25	
1,2-Dichloropropane	19.2	0.40	0.50	ug/L	20.0		96.0	82-125	1.52	25	
1,3-Dichloropropane	18.1	0.40	0.50	ug/L	20.0		90.4	83-120	1.79	25	
2,2-Dichloropropane	17.0	0.50	0.50	ug/L	20.0		84.8	80-125	0.235	25	
1,1-Dichloropropene	19.9	0.40	0.50	ug/L	20.0		99.5	85-130	1.30	25	
cis-1,3-Dichloropropene	22.0	0.40	0.50	ug/L	20.0		110	83-128	7.00	25	
trans-1,3-Dichloropropene	17.1	0.40	0.50	ug/L	20.0		85.6	67-129	6.64	25	
Diethyl ether	21.5	0.20	1.0	ug/L	20.0		108	70-130	8.37	25	
Di-isopropyl ether	22.3	0.40	0.50	ug/L	20.0		112	83-132	2.57	25	
Ethanol	1020	20	50	ug/L	980		104	50-150	2.30	25	
Ethylbenzene	19.6	0.40	0.50	ug/L	20.0		98.0	84-124	0.307	25	
Ethyl methacrylate	20.3	0.70	10	ug/L	20.0		102	70-130	9.96	25	
Ethyl tert-butyl ether	19.8	0.40	0.50	ug/L	20.0		98.8	74-127	0.304	25	
Hexachlorobutadiene	18.0	0.50	0.50	ug/L	20.0		90.0	75-135	6.04	25	
Hexachloroethane	16.3	0.40	1.0	ug/L	20.0		81.3	70-130	0.741	25	
2-Hexanone	18.6	0.50	5.0	ug/L	20.0		92.8	70-130	1.96	30	
Isobutanol	1900	40	100	ug/L	2000		95.1	70-130	3.15	25	
Isopropylbenzene	20.0	0.40	0.50	ug/L	20.0		100	75-116	5.39	25	
p-Isopropyltoluene	20.0	0.40	0.50	ug/L	20.0		99.8	78-124	5.65	25	
Methylene chloride	17.9	0.50	0.50	ug/L	20.0		89.4	72-132	2.48	25	
Methacrylonitrile	20.9	0.40	1.0	ug/L	20.0		104	70-130	0.382	25	
Methyl ethyl ketone	38.7	0.70	1.0	ug/L	40.0		96.8	58-157	7.28	25	
Methyl iodide	21.0	0.40	2.0	ug/L	20.0		105	56-167	7.44	30	
Methyl methacrylate	23.9	0.40	1.0	ug/L	20.0		120	70-130	15.8	25	
Methyl isobutyl ketone	38.5	0.60	1.0	ug/L	40.0		96.4	70-130	4.86	25	
Naphthalene	17.3	0.50	0.50	ug/L	20.0		86.4	84-134	2.57	25	
Methyl tert-butyl ether	19.1	0.50	0.50	ug/L	20.0		95.4	84-119	2.79	25	
Propionitrile	967	20	50	ug/L	1000		96.7	70-130	1.12	25	
n-Propylbenzene	18.5	0.40	0.50	ug/L	20.0		92.4	75-127	3.20	25	
Styrene	20.2	0.40	0.50	ug/L	20.0		101	80-125	0.495	25	
Tert-amyl methyl ether	18.3	0.40	0.50	ug/L	20.0		91.4	74-120	3.49	25	
Tert-butyl alcohol	415	6.0	10	ug/L	400		104	66-147	3.45	25	

The results in this report apply to the samples analyzed in accordance with the chain of custody document. This analytical report must be reproduced in its entirety.



Alpha Analytical Laboratories, Inc. email: clientservices@alpha-labs.com
 Corporate: 208 Mason Street | Ukiah, CA 95482 | T: 707-468-0401 | F: 707-468-5267 | ELAP# 1551

Sample Traps, LLC 262 Rickenbacker Circle Livermore CA, 94551	Project Manager: Quality Control Manager Project: QC- 40ml Clear VOA- HCl Project Number: Silicone Batch #2020093003	Reported: 02/03/21 09:42
---------------------------------------------------------------------	----------------------------------------------------------------------------------------------------------------------------	-----------------------------

Volatile Organic Compounds by EPA Method 8260B - Quality Control

Analyte	Result	MDL	Reporting Limit	Units	Spike Level	Source Result	%REC	%REC Limits	RPD	RPD Limit	Notes
---------	--------	-----	-----------------	-------	-------------	---------------	------	-------------	-----	-----------	-------

Batch AA14728 - VOAs in Water GCMS

LCS Dup (AA14728-BSD1)

Prepared & Analyzed: 01/27/21

1,1,1,2-Tetrachloroethane	17.9	0.40	0.50	ug/L	20.0		89.7	80-132	4.04	25	
1,1,2,2-Tetrachloroethane	18.1	0.30	0.50	ug/L	20.0		90.4	84-115	1.75	25	
Tetrachloroethene	19.3	0.40	0.50	ug/L	20.0		96.4	56-156	1.39	25	
Tetrahydrofuran	21.2	0.40	5.0	ug/L	20.0		106	70-130	4.58	25	
Toluene	18.8	0.30	0.30	ug/L	20.0		94.2	76-137	2.05	25	
1,2,4-Trichlorobenzene	20.2	0.50	0.50	ug/L	20.0		101	84-126	2.40	25	
1,2,3-Trichlorobenzene	19.0	0.50	0.50	ug/L	20.0		95.2	85-133	7.04	25	
1,1,1-Trichloroethane	19.1	0.40	0.50	ug/L	20.0		95.4	70-130	1.15	25	
1,1,2-Trichloroethane	18.8	0.40	0.50	ug/L	20.0		93.8	83-122	0.427	25	
Trichloroethene	18.7	0.40	0.50	ug/L	20.0		93.3	84-123	0.107	25	
Trichlorofluoromethane	19.3	0.20	0.50	ug/L	20.0		96.6	74-130	2.91	25	
1,2,3-Trichloropropane	18.8	0.40	0.50	ug/L	20.0		94.2	78-122	1.11	25	
Trichlorotrifluoroethane	21.4	0.20	0.50	ug/L	20.0		107	82-125	5.27	25	
1,2,4-Trimethylbenzene	18.6	0.40	0.50	ug/L	20.0		93.2	85-127	6.38	25	
1,3,5-Trimethylbenzene	20.1	0.30	0.50	ug/L	20.0		101	80-125	6.68	25	
Vinyl acetate	48.9	0.80	1.0	ug/L	40.0		122	60-140	5.42	25	
Vinyl chloride	22.5	0.40	0.50	ug/L	20.0		112	70-130	5.58	25	
m,p-Xylene	39.3	0.50	0.50	ug/L	40.0		98.3	81-124	0.507	25	
o-Xylene	19.5	0.40	0.50	ug/L	20.0		97.5	80-126	3.53	25	
Xylenes (total)	58.8	0.50	0.50	ug/L	60.0		98.0	81-126	1.52	25	
Surrogate: Bromofluorobenzene	26.9			ug/L	25.0		108	70-130			
Surrogate: Dibromofluoromethane	25.7			ug/L	25.0		103	70-130			
Surrogate: Toluene-d8	25.8			ug/L	25.0		103	70-130			

Matrix Spike (AA14728-MS1)

Source: 21A2228-01

Prepared & Analyzed: 01/27/21

Acetone	61.4	3.0	5.0	ug/L	80.0	ND	76.8	32-164			
Acetonitrile	1660	50	100	ug/L	2000	ND	83.1	70-130			
Allyl chloride	19.5	0.40	10	ug/L	20.0	ND	97.4	70-130			
Acrylonitrile	16.2	0.40	5.0	ug/L	20.0	ND	81.0	70-130			
Benzene	18.9	0.30	0.30	ug/L	20.0	ND	94.3	58-139			
Bromobenzene	19.1	0.40	0.50	ug/L	20.0	ND	95.4	63-143			
Bromochloromethane	22.4	0.40	0.50	ug/L	20.0	ND	112	60-141			
Bromodichloromethane	20.1	0.40	0.50	ug/L	20.0	ND	100	62-140			
Bromoform	14.8	0.30	0.50	ug/L	20.0	ND	74.1	47-165			
Bromomethane	21.1	0.40	0.50	ug/L	20.0	ND	106	30-163			
n-Butylbenzene	19.6	0.40	0.50	ug/L	20.0	ND	98.2	57-147			
sec-Butylbenzene	22.6	0.40	0.50	ug/L	20.0	ND	113	64-155			

The results in this report apply to the samples analyzed in accordance with the chain of custody document. This analytical report must be reproduced in its entirety.



Alpha Analytical Laboratories, Inc. email: clientservices@alpha-labs.com
 Corporate: 208 Mason Street | Ukiah, CA 95482 | T: 707-468-0401 | F: 707-468-5267 | ELAP# 1551

Sample Traps, LLC 262 Rickenbacker Circle Livermore CA, 94551	Project Manager: Quality Control Manager Project: QC- 40ml Clear VOA- HCl Project Number: Silicone Batch #2020093003	Reported: 02/03/21 09:42
---------------------------------------------------------------------	----------------------------------------------------------------------------------------------------------------------------	-----------------------------

Volatile Organic Compounds by EPA Method 8260B - Quality Control

Analyte	Result	MDL	Reporting Limit	Units	Spike Level	Source Result	%REC	%REC Limits	RPD	RPD Limit	Notes
---------	--------	-----	-----------------	-------	-------------	---------------	------	-------------	-----	-----------	-------

Batch AA14728 - VOAs in Water GCMS

Matrix Spike (AA14728-MS1)	Source: 21A2228-01			Prepared & Analyzed: 01/27/21							
tert-Butylbenzene	23.2	0.30	0.50	ug/L	20.0	ND	116	57-150			
Carbon disulfide	26.0	0.40	5.0	ug/L	20.0	ND	130	70-130			
Carbon tetrachloride	23.2	0.40	0.50	ug/L	20.0	ND	116	65-153			
Chlorobenzene	18.3	0.30	0.50	ug/L	20.0	ND	91.7	58-137			
Chloroethane	21.9	0.40	0.50	ug/L	20.0	ND	110	59-141			
2-Chloroethylvinyl ether	ND	0.70	1.0	ug/L	40.0	ND		73-107			QM-05, U
Chloroform	21.8	0.40	0.50	ug/L	20.0	ND	109	36-151			
Chloromethane	24.0	0.40	0.50	ug/L	20.0	ND	120	69-149			
Chloroprene	23.2	0.40	1.0	ug/L	20.0	ND	116	70-130			
2-Chlorotoluene	20.1	0.40	0.50	ug/L	20.0	ND	100	54-150			
4-Chlorotoluene	20.2	0.30	0.50	ug/L	20.0	ND	101	59-140			
Dibromochloromethane	18.8	0.40	0.50	ug/L	20.0	ND	94.2	54-157			
1,2-Dibromo-3-chloropropane	12.8	0.60	2.0	ug/L	20.0	ND	64.1	54-137			
1,2-Dibromoethane (EDB)	17.3	0.40	0.50	ug/L	20.0	ND	86.6	40-147			
Dibromomethane	19.0	0.40	0.50	ug/L	20.0	ND	95.2	59-139			
1,2-Dichlorobenzene	19.1	0.40	0.50	ug/L	20.0	ND	95.6	39-145			
1,3-Dichlorobenzene	19.0	0.40	0.50	ug/L	20.0	ND	95.0	54-137			
1,4-Dichlorobenzene	17.8	0.10	0.50	ug/L	20.0	ND	89.0	41-142			
trans-1,4-Dichloro-2-butene	11.9	0.50	5.0	ug/L	20.0	ND	59.6	70-130			QM-05
Dichlorodifluoromethane	22.8	0.40	0.50	ug/L	20.0	ND	114	39-162			
1,1-Dichloroethane	21.1	0.30	0.50	ug/L	20.0	ND	106	39-146			
1,2-Dichloroethane	18.3	0.40	0.50	ug/L	20.0	ND	91.5	58-133			
1,1-Dichloroethene	22.6	0.30	0.50	ug/L	20.0	ND	113	70-154			
cis-1,2-Dichloroethene	20.8	0.40	0.50	ug/L	20.0	ND	104	66-141			
trans-1,2-Dichloroethene	22.8	0.40	0.50	ug/L	20.0	ND	114	59-151			
1,2-Dichloropropane	18.4	0.40	0.50	ug/L	20.0	ND	91.8	41-142			
1,3-Dichloropropane	16.4	0.40	0.50	ug/L	20.0	ND	82.2	62-139			
2,2-Dichloropropane	19.2	0.50	0.50	ug/L	20.0	ND	96.0	40-167			
1,1-Dichloropropene	21.5	0.40	0.50	ug/L	20.0	ND	108	58-148			
cis-1,3-Dichloropropene	19.0	0.40	0.50	ug/L	20.0	ND	95.0	50-140			
trans-1,3-Dichloropropene	14.5	0.40	0.50	ug/L	20.0	ND	72.3	40-144			
Diethyl ether	24.4	0.20	1.0	ug/L	20.0	ND	122	70-130			
Di-isopropyl ether	24.2	0.40	0.50	ug/L	20.0	ND	121	49-143			
Ethyl methacrylate	15.6	0.70	10	ug/L	20.0	ND	77.8	70-130			
Ethylbenzene	19.7	0.40	0.50	ug/L	20.0	ND	98.4	59-147			
Ethanol	908	20	50	ug/L	980	ND	92.7	50-150			

The results in this report apply to the samples analyzed in accordance with the chain of custody document. This analytical report must be reproduced in its entirety.



Alpha Analytical Laboratories, Inc. email: clientservices@alpha-labs.com
 Corporate: 208 Mason Street | Ukiah, CA 95482 | T: 707-468-0401 | F: 707-468-5267 | ELAP# 1551

Sample Traps, LLC 262 Rickenbacker Circle Livermore CA, 94551	Project Manager: Quality Control Manager Project: QC- 40ml Clear VOA- HCl Project Number: Silicone Batch #2020093003	Reported: 02/03/21 09:42
---------------------------------------------------------------------	----------------------------------------------------------------------------------------------------------------------------	-----------------------------

Volatile Organic Compounds by EPA Method 8260B - Quality Control

Analyte	Result	MDL	Reporting Limit	Units	Spike Level	Source Result	%REC	%REC Limits	RPD	RPD Limit	Notes
---------	--------	-----	-----------------	-------	-------------	---------------	------	-------------	-----	-----------	-------

Batch AA14728 - VOAs in Water GCMS

Matrix Spike (AA14728-MS1)	Source: 21A2228-01			Prepared & Analyzed: 01/27/21							
Hexachlorobutadiene	19.7	0.50	0.50	ug/L	20.0	ND	98.6	56-149			
Ethyl tert-butyl ether	21.3	0.40	0.50	ug/L	20.0	ND	107	44-143			
Hexachloroethane	17.1	0.40	1.0	ug/L	20.0	ND	85.4	70-130			
2-Hexanone	14.8	0.50	5.0	ug/L	20.0	ND	74.0	70-130			
Isopropylbenzene	22.4	0.40	0.50	ug/L	20.0	ND	112	56-134			
Isobutanol	1390	40	100	ug/L	2000	ND	69.5	70-130			QM-05
p-Isopropyltoluene	22.9	0.40	0.50	ug/L	20.0	ND	114	54-148			
Methylene chloride	20.2	0.50	0.50	ug/L	20.0	ND	101	43-143			
Methacrylonitrile	16.2	0.40	1.0	ug/L	20.0	ND	80.8	70-130			
Methyl ethyl ketone	27.2	0.70	1.0	ug/L	40.0	ND	68.1	62-126			
Methyl iodide	25.6	0.40	2.0	ug/L	20.0	ND	128	70-130			
Methyl methacrylate	16.6	0.40	1.0	ug/L	20.0	ND	83.2	70-130			
Methyl isobutyl ketone	29.7	0.60	1.0	ug/L	40.0	ND	74.4	66-127			
Propionitrile	778	20	50	ug/L	1000	ND	77.8	70-130			
Naphthalene	13.8	0.50	0.50	ug/L	20.0	ND	68.8	52-157			
Methyl tert-butyl ether	20.6	0.50	0.50	ug/L	20.0	ND	103	55-144			
n-Propylbenzene	19.8	0.40	0.50	ug/L	20.0	ND	98.8	55-145			
Styrene	19.8	0.40	0.50	ug/L	20.0	ND	99.2	51-157			
Tert-amyl methyl ether	20.1	0.40	0.50	ug/L	20.0	ND	101	41-136			
Tert-butyl alcohol	335	6.0	10	ug/L	400	ND	83.8	38-175			
1,1,1,2-Tetrachloroethane	19.6	0.40	0.50	ug/L	20.0	ND	98.2	58-146			
1,1,2,2-Tetrachloroethane	16.2	0.30	0.50	ug/L	20.0	ND	80.8	73-127			
Tetrachloroethene	20.2	0.40	0.50	ug/L	20.0	ND	101	49-148			
Tetrahydrofuran	17.7	0.40	5.0	ug/L	20.0	ND	88.3	70-130			
Toluene	19.2	0.30	0.30	ug/L	20.0	ND	96.2	59-147			
1,2,4-Trichlorobenzene	20.2	0.50	0.50	ug/L	20.0	ND	101	50-150			
1,2,3-Trichlorobenzene	17.6	0.50	0.50	ug/L	20.0	ND	88.0	50-161			
1,1,1-Trichloroethane	23.5	0.40	0.50	ug/L	20.0	ND	117	38-164			
1,1,2-Trichloroethane	17.1	0.40	0.50	ug/L	20.0	ND	85.4	46-136			
Trichloroethene	19.4	0.40	0.50	ug/L	20.0	ND	97.0	58-140			
Trichlorofluoromethane	23.4	0.20	0.50	ug/L	20.0	ND	117	56-144			
1,2,3-Trichloropropane	16.3	0.40	0.50	ug/L	20.0	ND	81.6	61-139			
Trichlorotrifluoroethane	27.9	0.20	0.50	ug/L	20.0	ND	139	59-139			
1,2,4-Trimethylbenzene	20.6	0.40	0.50	ug/L	20.0	ND	103	58-152			
1,3,5-Trimethylbenzene	22.2	0.30	0.50	ug/L	20.0	ND	111	58-148			
Vinyl acetate	40.1	0.80	1.0	ug/L	40.0	ND	100	70-130			

The results in this report apply to the samples analyzed in accordance with the chain of custody document. This analytical report must be reproduced in its entirety.



Alpha Analytical Laboratories, Inc. email: clientservices@alpha-labs.com
 Corporate: 208 Mason Street | Ukiah, CA 95482 | T: 707-468-0401 | F: 707-468-5267 | ELAP# 1551

Sample Traps, LLC 262 Rickenbacker Circle Livermore CA, 94551	Project Manager: Quality Control Manager Project: QC- 40ml Clear VOA- HCl Project Number: Silicone Batch #2020093003	Reported: 02/03/21 09:42
---------------------------------------------------------------------	----------------------------------------------------------------------------------------------------------------------------	-----------------------------

Volatile Organic Compounds by EPA Method 8260B - Quality Control

Analyte	Result	MDL	Reporting Limit	Units	Spike Level	Source Result	%REC	%REC Limits	RPD	RPD Limit	Notes
---------	--------	-----	-----------------	-------	-------------	---------------	------	-------------	-----	-----------	-------

Batch AA14728 - VOAs in Water GCMS

Matrix Spike (AA14728-MS1)	Source: 21A2228-01			Prepared & Analyzed: 01/27/21							
Vinyl chloride	25.7	0.40	0.50	ug/L	20.0	ND	129	53-160			
m,p-Xylene	39.4	0.50	0.50	ug/L	40.0	ND	98.6	53-147			
o-Xylene	20.3	0.40	0.50	ug/L	20.0	ND	101	55-148			
Xylenes (total)	59.7	0.50	0.50	ug/L	60.0	ND	99.6	49-153			
Surrogate: Bromofluorobenzene	27.9			ug/L	25.0		112	70-130			
Surrogate: Dibromofluoromethane	28.3			ug/L	25.0		113	70-130			
Surrogate: Toluene-d8	25.7			ug/L	25.0		103	70-130			

Matrix Spike Dup (AA14728-MSD1)	Source: 21A2228-01			Prepared & Analyzed: 01/27/21							
Acetone	60.9	3.0	5.0	ug/L	80.0	ND	76.1	32-164	0.915	25	
Acetonitrile	1500	50	100	ug/L	2000	ND	75.0	70-130	10.3	25	
Allyl chloride	17.1	0.40	10	ug/L	20.0	ND	85.5	70-130	13.1	25	
Acrylonitrile	16.4	0.40	5.0	ug/L	20.0	ND	82.0	70-130	1.17	25	
Benzene	18.4	0.30	0.30	ug/L	20.0	ND	92.2	58-139	2.31	25	
Bromobenzene	19.8	0.40	0.50	ug/L	20.0	ND	99.0	63-143	3.81	25	
Bromochloromethane	21.6	0.40	0.50	ug/L	20.0	ND	108	60-141	3.81	25	
Bromodichloromethane	19.7	0.40	0.50	ug/L	20.0	ND	98.4	62-140	2.01	25	
Bromoform	14.9	0.30	0.50	ug/L	20.0	ND	74.6	47-165	0.605	25	
Bromomethane	20.2	0.40	0.50	ug/L	20.0	ND	101	30-163	4.30	25	
n-Butylbenzene	18.8	0.40	0.50	ug/L	20.0	ND	94.1	57-147	4.26	25	
sec-Butylbenzene	22.3	0.40	0.50	ug/L	20.0	ND	112	64-155	1.20	25	
tert-Butylbenzene	22.8	0.30	0.50	ug/L	20.0	ND	114	57-150	1.66	25	
Carbon disulfide	26.0	0.40	5.0	ug/L	20.0	ND	130	70-130	0.0769	30	
Carbon tetrachloride	22.8	0.40	0.50	ug/L	20.0	ND	114	65-153	1.78	25	
Chlorobenzene	18.0	0.30	0.50	ug/L	20.0	ND	90.2	58-137	1.70	25	
Chloroethane	21.9	0.40	0.50	ug/L	20.0	ND	109	59-141	0.228	25	
2-Chloroethylvinyl ether	ND	0.70	1.0	ug/L	40.0	ND		73-107		30	QM-05, U
Chloroform	21.5	0.40	0.50	ug/L	20.0	ND	107	36-151	1.57	25	
Chloromethane	23.2	0.40	0.50	ug/L	20.0	ND	116	69-149	3.31	25	
Chloroprene	23.4	0.40	1.0	ug/L	20.0	ND	117	70-130	0.902	25	
2-Chlorotoluene	20.6	0.40	0.50	ug/L	20.0	ND	103	54-150	2.41	25	
4-Chlorotoluene	20.3	0.30	0.50	ug/L	20.0	ND	101	59-140	0.395	25	
Dibromochloromethane	18.7	0.40	0.50	ug/L	20.0	ND	93.4	54-157	0.852	25	
1,2-Dibromo-3-chloropropane	10.8	0.60	2.0	ug/L	20.0	ND	54.2	54-137	16.6	25	
1,2-Dibromoethane (EDB)	17.7	0.40	0.50	ug/L	20.0	ND	88.6	40-147	2.28	25	
Dibromomethane	18.4	0.40	0.50	ug/L	20.0	ND	92.0	59-139	3.47	25	
1,2-Dichlorobenzene	18.2	0.40	0.50	ug/L	20.0	ND	90.8	39-145	5.10	25	

The results in this report apply to the samples analyzed in accordance with the chain of custody document. This analytical report must be reproduced in its entirety.



Alpha Analytical Laboratories, Inc. email: clientservices@alpha-labs.com
 Corporate: 208 Mason Street | Ukiah, CA 95482 | T: 707-468-0401 | F: 707-468-5267 | ELAP# 1551

Sample Traps, LLC 262 Rickenbacker Circle Livermore CA, 94551	Project Manager: Quality Control Manager Project: QC- 40ml Clear VOA- HCl Project Number: Silicone Batch #2020093003	Reported: 02/03/21 09:42
---------------------------------------------------------------------	----------------------------------------------------------------------------------------------------------------------------	-----------------------------

Volatile Organic Compounds by EPA Method 8260B - Quality Control

Analyte	Result	MDL	Reporting Limit	Units	Spike Level	Source Result	%REC	%REC Limits	RPD	RPD Limit	Notes
---------	--------	-----	-----------------	-------	-------------	---------------	------	-------------	-----	-----------	-------

Batch AA14728 - VOAs in Water GCMS

Matrix Spike Dup (AA14728-MSD1)	Source: 21A2228-01			Prepared & Analyzed: 01/27/21							
1,3-Dichlorobenzene	19.4	0.40	0.50	ug/L	20.0	ND	96.9	54-137	2.03	25	
1,4-Dichlorobenzene	17.3	0.10	0.50	ug/L	20.0	ND	86.6	41-142	2.79	25	
trans-1,4-Dichloro-2-butene	12.9	0.50	5.0	ug/L	20.0	ND	64.6	70-130	8.21	25	QM-05
Dichlorodifluoromethane	21.8	0.40	0.50	ug/L	20.0	ND	109	39-162	4.08	25	
1,1-Dichloroethane	21.3	0.30	0.50	ug/L	20.0	ND	107	39-146	0.989	25	
1,2-Dichloroethane	17.1	0.40	0.50	ug/L	20.0	ND	85.6	58-133	6.60	25	
1,1-Dichloroethene	22.4	0.30	0.50	ug/L	20.0	ND	112	70-154	0.978	25	
cis-1,2-Dichloroethene	20.0	0.40	0.50	ug/L	20.0	ND	100	66-141	3.82	25	
trans-1,2-Dichloroethene	23.2	0.40	0.50	ug/L	20.0	ND	116	59-151	1.52	25	
1,2-Dichloropropane	18.6	0.40	0.50	ug/L	20.0	ND	92.8	41-142	1.14	25	
1,3-Dichloropropane	16.2	0.40	0.50	ug/L	20.0	ND	81.0	62-139	1.41	25	
2,2-Dichloropropane	19.0	0.50	0.50	ug/L	20.0	ND	94.8	40-167	1.31	25	
1,1-Dichloropropene	22.1	0.40	0.50	ug/L	20.0	ND	110	58-148	2.57	25	
cis-1,3-Dichloropropene	19.3	0.40	0.50	ug/L	20.0	ND	96.3	50-140	1.36	25	
trans-1,3-Dichloropropene	15.0	0.40	0.50	ug/L	20.0	ND	75.0	40-144	3.60	25	
Diethyl ether	23.8	0.20	1.0	ug/L	20.0	ND	119	70-130	2.33	25	
Di-isopropyl ether	24.1	0.40	0.50	ug/L	20.0	ND	121	49-143	0.372	25	
Ethylbenzene	20.0	0.40	0.50	ug/L	20.0	ND	99.8	59-147	1.46	25	
Ethyl methacrylate	16.6	0.70	10	ug/L	20.0	ND	83.0	70-130	6.34	25	
Ethanol	852	20	50	ug/L	980	ND	87.0	50-150	6.35	25	
Hexachloroethane	16.4	0.40	1.0	ug/L	20.0	ND	82.1	70-130	3.94	25	
Ethyl tert-butyl ether	21.7	0.40	0.50	ug/L	20.0	ND	108	44-143	1.68	25	
Hexachlorobutadiene	19.8	0.50	0.50	ug/L	20.0	ND	98.9	56-149	0.253	25	
2-Hexanone	14.5	0.50	5.0	ug/L	20.0	ND	72.7	70-130	1.77	30	
Isobutanol	1420	40	100	ug/L	2000	ND	70.9	70-130	1.94	25	
Isopropylbenzene	22.2	0.40	0.50	ug/L	20.0	ND	111	56-134	0.718	25	
p-Isopropyltoluene	22.5	0.40	0.50	ug/L	20.0	ND	113	54-148	1.67	25	
Methylene chloride	19.8	0.50	0.50	ug/L	20.0	ND	99.0	43-143	1.85	25	
Methacrylonitrile	16.8	0.40	1.0	ug/L	20.0	ND	83.8	70-130	3.64	25	
Methyl ethyl ketone	26.6	0.70	1.0	ug/L	40.0	ND	66.6	62-126	2.27	25	
Methyl iodide	25.5	0.40	2.0	ug/L	20.0	ND	128	70-130	0.235	30	
Methyl isobutyl ketone	29.1	0.60	1.0	ug/L	40.0	ND	72.7	66-127	2.28	25	
Methyl methacrylate	17.0	0.40	1.0	ug/L	20.0	ND	85.1	70-130	2.26	25	
Methyl tert-butyl ether	20.2	0.50	0.50	ug/L	20.0	ND	101	55-144	1.77	25	
Naphthalene	13.6	0.50	0.50	ug/L	20.0	ND	67.8	52-157	1.54	25	
Propionitrile	758	20	50	ug/L	1000	ND	75.8	70-130	2.62	25	

The results in this report apply to the samples analyzed in accordance with the chain of custody document. This analytical report must be reproduced in its entirety.



Alpha Analytical Laboratories, Inc. email: clientservices@alpha-labs.com
 Corporate: 208 Mason Street | Ukiah, CA 95482 | T: 707-468-0401 | F: 707-468-5267 | ELAP# 1551

Sample Traps, LLC 262 Rickenbacker Circle Livermore CA, 94551	Project Manager: Quality Control Manager Project: QC- 40ml Clear VOA- HCl Project Number: Silicone Batch #2020093003	Reported: 02/03/21 09:42
---------------------------------------------------------------------	----------------------------------------------------------------------------------------------------------------------------	-----------------------------

Volatile Organic Compounds by EPA Method 8260B - Quality Control

Analyte	Result	MDL	Reporting Limit	Units	Spike Level	Source Result	%REC	%REC Limits	RPD	RPD Limit	Notes
---------	--------	-----	-----------------	-------	-------------	---------------	------	-------------	-----	-----------	-------

Batch AA14728 - VOAs in Water GCMS

Matrix Spike Dup (AA14728-MSD1)	Source: 21A2228-01			Prepared & Analyzed: 01/27/21							
n-Propylbenzene	19.9	0.40	0.50	ug/L	20.0	ND	99.6	55-145	0.907	25	
Styrene	20.1	0.40	0.50	ug/L	20.0	ND	100	51-157	1.25	25	
Tert-amyl methyl ether	20.4	0.40	0.50	ug/L	20.0	ND	102	41-136	1.33	25	
Tert-butyl alcohol	346	6.0	10	ug/L	400	ND	86.5	38-175	3.14	25	
1,1,1,2-Tetrachloroethane	19.3	0.40	0.50	ug/L	20.0	ND	96.6	58-146	1.75	25	
1,1,2,2-Tetrachloroethane	16.2	0.30	0.50	ug/L	20.0	ND	81.2	73-127	0.494	25	
Tetrachloroethene	20.0	0.40	0.50	ug/L	20.0	ND	99.8	49-148	1.39	25	
Tetrahydrofuran	16.6	0.40	5.0	ug/L	20.0	ND	82.9	70-130	6.31	25	
Toluene	19.0	0.30	0.30	ug/L	20.0	ND	94.8	59-147	1.57	25	
1,2,4-Trichlorobenzene	19.8	0.50	0.50	ug/L	20.0	ND	99.2	50-150	1.75	25	
1,2,3-Trichlorobenzene	17.4	0.50	0.50	ug/L	20.0	ND	86.8	50-161	1.37	25	
1,1,1-Trichloroethane	23.1	0.40	0.50	ug/L	20.0	ND	115	38-164	1.72	25	
1,1,2-Trichloroethane	16.7	0.40	0.50	ug/L	20.0	ND	83.4	46-136	2.31	25	
Trichloroethene	18.9	0.40	0.50	ug/L	20.0	ND	94.4	58-140	2.72	25	
Trichlorofluoromethane	23.9	0.20	0.50	ug/L	20.0	ND	119	56-144	2.03	25	
1,2,3-Trichloropropane	16.6	0.40	0.50	ug/L	20.0	ND	82.8	61-139	1.46	25	
Trichlorotrifluoroethane	26.2	0.20	0.50	ug/L	20.0	ND	131	59-139	6.17	25	
1,2,4-Trimethylbenzene	20.6	0.40	0.50	ug/L	20.0	ND	103	58-152	0.340	25	
1,3,5-Trimethylbenzene	22.3	0.30	0.50	ug/L	20.0	ND	111	58-148	0.270	25	
Vinyl acetate	39.6	0.80	1.0	ug/L	40.0	ND	98.9	70-130	1.43	25	
Vinyl chloride	23.1	0.40	0.50	ug/L	20.0	ND	116	53-160	10.7	25	
m,p-Xylene	40.6	0.50	0.50	ug/L	40.0	ND	102	53-147	2.97	25	
o-Xylene	20.8	0.40	0.50	ug/L	20.0	ND	104	55-148	2.48	25	
Xylenes (total)	61.4	0.50	0.50	ug/L	60.0	ND	102	49-153	2.81	25	
Surrogate: Bromofluorobenzene	27.9			ug/L	25.0		112	70-130			
Surrogate: Dibromofluoromethane	27.9			ug/L	25.0		112	70-130			
Surrogate: Toluene-d8	25.6			ug/L	25.0		102	70-130			

The results in this report apply to the samples analyzed in accordance with the chain of custody document. This analytical report must be reproduced in its entirety.



Alpha Analytical Laboratories, Inc. email: clientservices@alpha-labs.com
Corporate: 208 Mason Street | Ukiah, CA 95482 | T: 707-468-0401 | F: 707-468-5267 | ELAP# 1551

Sample Traps, LLC
262 Rickenbacker Circle
Livermore CA, 94551

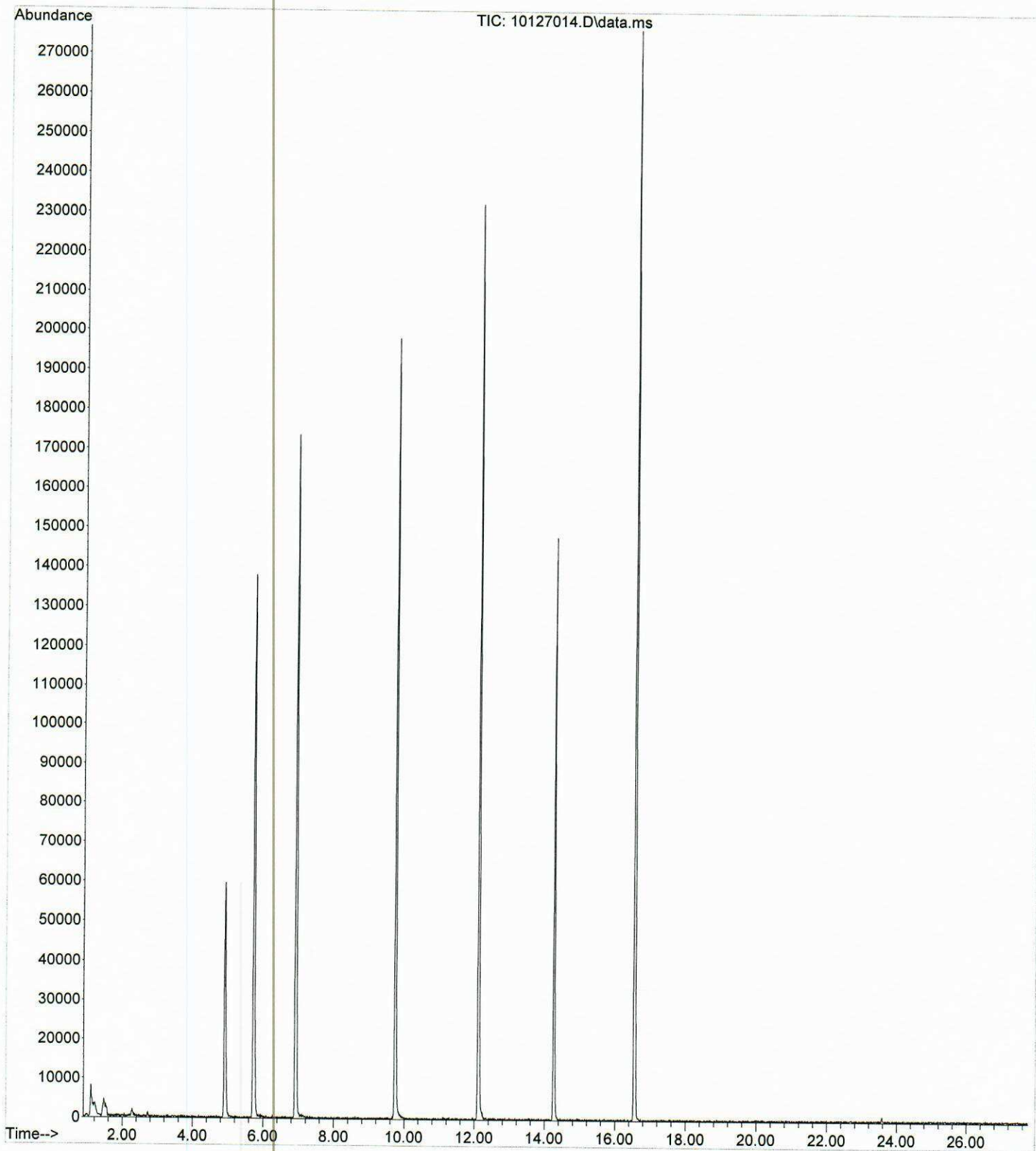
Project Manager: Quality Control Manager
Project: QC- 40ml Clear VOA- HCl
Project Number: Silicone Batch #2020093003

Reported:
02/03/21 09:42

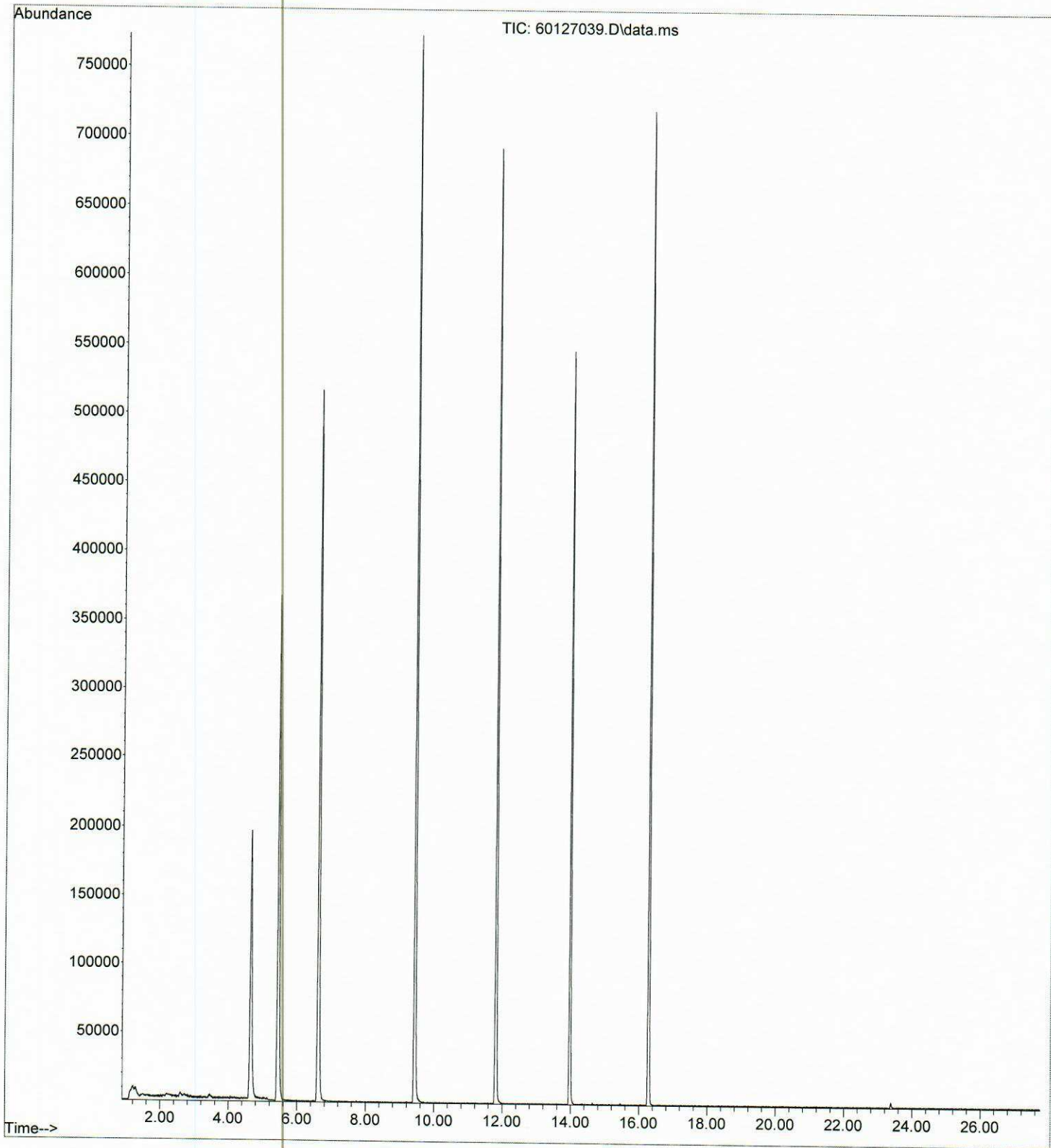
Notes and Definitions

- J Detected but below the Reporting Limit; therefore, result is an estimated concentration, detected but not quantified (DNQ).
- QM-05 The spike recovery was outside acceptance limits for the MS and/or MSD due to matrix interference. The LCS and/or LCSD were within acceptance limits showing that the laboratory is in control and the data is acceptable.
- U Analyte included in analysis, but not detected at or above MDL.
- ND Analyte NOT DETECTED at or above the reporting limit
- dry Sample results reported on a dry weight basis
- MDL Method detection limit
- Rec Recovery
- RPD Relative Percent Difference

File :D:\Data\012721\10127014.D
Operator : JV
Acquired : 27 Jan 2021 5:35 pm using AcqMethod MS1INS.M
Instrument : GCMS1
Sample Name: 21A2001-01
Misc Info :
Vial Number: 14



File :D:\MassHunter\GCMS\1\data\012721\60127039.D
Operator : LJJ/JV
Acquired : 28 Jan 2021 01:13 pm using AcqMethod MS6INS.M
Instrument : GCMS6
Sample Name: 21A2001-02
Misc Info :
Vial Number: 39





Laboratory & Corporate: 208 Mason Street, Ukiah, CA 95482
707-468-0401 Fax: 707-468-5267

Service Center & Micro Lab: 262 Rickenbacker Circle, Livermore CA 94551
925-828-6226 Fax: 925-828-6309

Chain of Custody Record

Reports and Invoices will be delivered by email in .pdf format.

Lab No. 21A2001 Page of

Report to:		Invoice to (if different):		Project Info for Report:		Signature below authorizes work under terms stated on reverse side.																						
Company: Sample Traps LLC		Company:		Project ID: QC- 40ml Clear VOA Vial (HCL)		Analyses Requested					TAT 10 days <input type="radio"/> 5 days <input type="radio"/> 48 hours <input type="radio"/> Other: <input type="radio"/> days		Sample Notes (lab use only) Temperature: deg. C Shipment Method: Custody Seals: Y / N															
Attn: Quality Control Manager		Attn:		Project No: Silicone Batch Number 2020093003																								
Address:		Address:		PO/Reference :		: Total Number of Containers 8260 Sample Traps 524.2 Sample Traps j-flags include chromatograph with report					Lab Approval Required For Rush TATs																	
Phone/Fax:		Phone/Fax:		Email Address: admin@sampletraps.com																								
Samplers Signature:		Container:		Preservative:		Matrix:							Sample Notes or CDPH Source Numbers:															
Print:		40ml VOA		HCL		Container																						
Sample Identification		Sampled: Date Time		Poly		Glass bottle		Glass Jar		Methanol		Na Bisulfate		Other		None		Water		Container								
B1006CVBS - 01		1/14		x		x		x		x		x		x		x		x		2		x		x				
B1006CVBS - 02		"		x		x		x		x		x		x		x		x		2		x		x				
please use Ukiah reagent water for the analysis																												
Relinquished by:		Received by:		Date:		Time:		CDPH Write On EDT Transmission? <input type="radio"/> Yes <input type="radio"/> No																				
Via BAL				1-14-21		8900		State System Number: _____ If "Y" please enter the Source Number(s) in the column above																				
CA Geotracker EDF Report? <input type="radio"/> Yes <input type="radio"/> No																												
Global ID: _____ Sampling Company Log Code: _____																												
EDF to (Email Address): _____																												
Travel and Site Time:										Mileage:					Misc. Supplies:													